

Calcul

7^{ème} HARMOS



Ce dossier appartient à

Nom + prénom :

Objectif : *additionner mentalement des nombres dont la somme est inférieure à 1000.*

$135 + 471 = \dots\dots\dots$

$284 + 317 = \dots\dots\dots$

$601 + 349 = \dots\dots\dots$

$543 + 316 = \dots\dots\dots$

$327 + 583 = \dots\dots\dots$

$461 + 381 = \dots\dots\dots$

$274 + 492 = \dots\dots\dots$

$342 + 243 = \dots\dots\dots$

$648 + 108 = \dots\dots\dots$

$493 + 372 = \dots\dots\dots$

$572 + 316 = \dots\dots\dots$

$663 + 108 = \dots\dots\dots$

$409 + 509 = \dots\dots\dots$

$118 + 617 = \dots\dots\dots$

$376 + 108 = \dots\dots\dots$

$47 + 63 + 18 = \dots\dots\dots$

$25 + 94 + 10 = \dots\dots\dots$

$35 + 27 + 56 = \dots\dots\dots$

$37 + 16 + 45 = \dots\dots\dots$

$74 + 52 + 31 = \dots\dots\dots$

$36 + 117 + 28 = \dots\dots\dots$

$94 + 78 + 106 = \dots\dots\dots$

$207 + 31 + 94 = \dots\dots\dots$

$28 + 146 + 37 = \dots\dots\dots$

$284 + 26 + 10 = \dots\dots\dots$

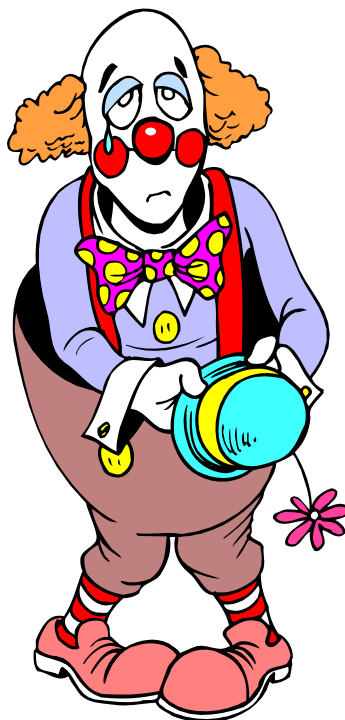
$117 + 25 + 108 = \dots\dots\dots$

$34 + 208 + 119 = \dots\dots\dots$

$148 + 112 + 37 = \dots\dots\dots$

$65 + 234 + 116 = \dots\dots\dots$

$304 + 256 + 25 = \dots\dots\dots$



Nom + prénom :

Objectif : soustraire mentalement un nombre de 2 chiffres à un nombre de 3 chiffres.

$856 - 42 = \dots\dots\dots$

$716 - 89 = \dots\dots\dots$

$294 - 47 = \dots\dots\dots$

$665 - 48 = \dots\dots\dots$

$637 - 81 = \dots\dots\dots$

$308 - 94 = \dots\dots\dots$

$749 - 75 = \dots\dots\dots$

$520 - 68 = \dots\dots\dots$

$221 - 57 = \dots\dots\dots$

$728 - 99 = \dots\dots\dots$

$574 - 91 = \dots\dots\dots$

$792 - 39 = \dots\dots\dots$

$226 - 84 = \dots\dots\dots$

$418 - 39 = \dots\dots\dots$

$307 - 71 = \dots\dots\dots$

$360 - 84 = \dots\dots\dots$

$747 - 98 = \dots\dots\dots$

$384 - 27 = \dots\dots\dots$

$505 - 64 = \dots\dots\dots$

$108 - 57 = \dots\dots\dots$

$819 - 62 = \dots\dots\dots$

$618 - 71 = \dots\dots\dots$

$964 - 87 = \dots\dots\dots$

$771 - 85 = \dots\dots\dots$

$552 - 81 = \dots\dots\dots$

$924 - 68 = \dots\dots\dots$

$314 - 77 = \dots\dots\dots$

$619 - 49 = \dots\dots\dots$

$213 - 67 = \dots\dots\dots$

$337 - 48 = \dots\dots\dots$



Nom + prénom :

Objectif : soustraire mentalement un nombre de 2 chiffres à un nombre de 3 chiffres.

$458 - 73 = \dots\dots\dots$

$846 - 87 = \dots\dots\dots$

$619 - 47 = \dots\dots\dots$

$327 - 69 = \dots\dots\dots$

$361 - 81 = \dots\dots\dots$

$417 - 58 = \dots\dots\dots$

$748 - 85 = \dots\dots\dots$

$274 - 96 = \dots\dots\dots$

$208 - 94 = \dots\dots\dots$

$614 - 65 = \dots\dots\dots$

$843 - 71 = \dots\dots\dots$

$218 - 68 = \dots\dots\dots$

$637 - 94 = \dots\dots\dots$

$634 - 86 = \dots\dots\dots$

$519 - 65 = \dots\dots\dots$

$721 - 34 = \dots\dots\dots$

$475 - 92 = \dots\dots\dots$

$246 - 59 = \dots\dots\dots$

$714 - 61 = \dots\dots\dots$

$627 - 59 = \dots\dots\dots$

$668 - 74 = \dots\dots\dots$

$128 - 64 = \dots\dots\dots$

$329 - 48 = \dots\dots\dots$

$314 - 28 = \dots\dots\dots$

$242 - 81 = \dots\dots\dots$

$538 - 79 = \dots\dots\dots$

$307 - 65 = \dots\dots\dots$

$216 - 48 = \dots\dots\dots$

$449 - 71 = \dots\dots\dots$

$335 - 76 = \dots\dots\dots$



Nom + prénom :

Objectif : *additionner et soustraire mentalement*

$25 + 36 + 47 = \dots\dots\dots$

$204 - 78 = \dots\dots\dots$

$81 - 27 = \dots\dots\dots$

$482 + 374 = \dots\dots\dots$

$156 + 84 = \dots\dots\dots$

$683 - 195 = \dots\dots\dots$

$204 - 35 = \dots\dots\dots$

$105 + 136 + 127 = \dots\dots\dots$

$31 + 84 + 20 = \dots\dots\dots$

$317 - 247 = \dots\dots\dots$

$129 - 57 = \dots\dots\dots$

$184 + 27 + 15 = \dots\dots\dots$

$34 + 26 + 75 = \dots\dots\dots$

$333 - 188 = \dots\dots\dots$

$344 - 56 = \dots\dots\dots$

$622 + 184 = \dots\dots\dots$

$549 + 73 = \dots\dots\dots$

$684 - 246 = \dots\dots\dots$

$816 - 76 = \dots\dots\dots$

$37 + 14 + 63 = \dots\dots\dots$

$27 + 91 + 11 = \dots\dots\dots$

$451 - 226 = \dots\dots\dots$

$514 - 280 = \dots\dots\dots$

$325 + 117 + 208 = \dots\dots\dots$

$225 + 348 = \dots\dots\dots$

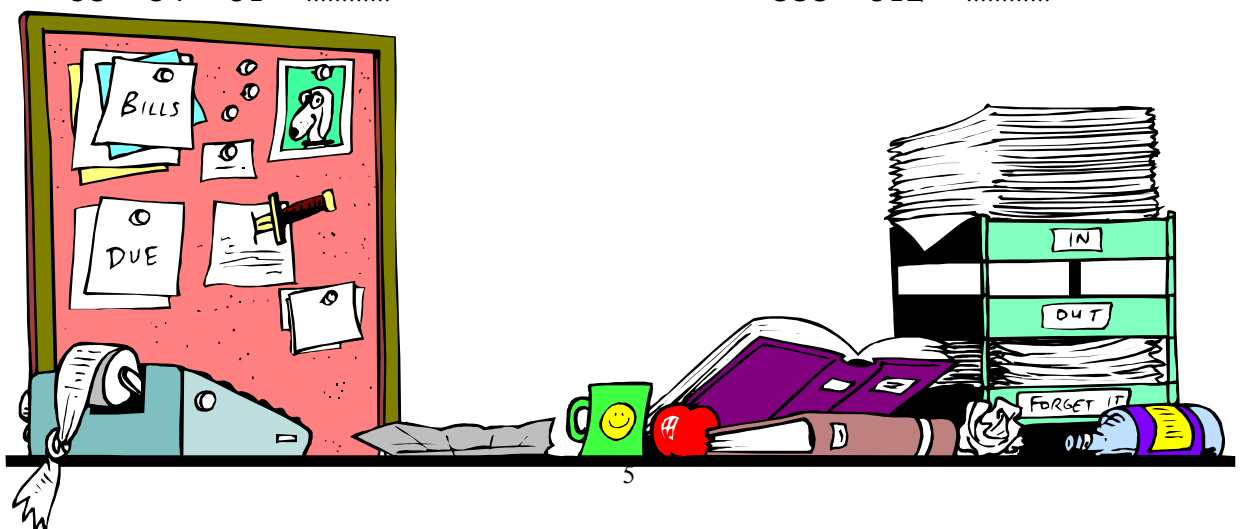
$508 - 69 = \dots\dots\dots$

$628 - 69 = \dots\dots\dots$

$373 + 84 = \dots\dots\dots$

$58 + 34 + 61 = \dots\dots\dots$

$888 - 612 = \dots\dots\dots$



Nom + prénom :

Objectif : *additionner et soustraire mentalement*

$65 + 21 + 84 = \dots\dots\dots$

$778 - 29 = \dots\dots\dots$

$32 + 94 + 71 = \dots\dots\dots$

$341 - 81 = \dots\dots\dots$

$33 + 48 + 90 = \dots\dots\dots$

$614 - 84 = \dots\dots\dots$

$20 + 54 + 61 = \dots\dots\dots$

$473 - 49 = \dots\dots\dots$

$35 + 97 + 14 = \dots\dots\dots$

$835 - 95 = \dots\dots\dots$

$160 + 23 + 64 = \dots\dots\dots$

$194 - 78 = \dots\dots\dots$

$210 + 34 + 58 = \dots\dots\dots$

$634 - 93 = \dots\dots\dots$

$120 + 47 + 25 = \dots\dots\dots$

$332 - 82 = \dots\dots\dots$

$340 + 12 + 66 = \dots\dots\dots$

$845 - 62 = \dots\dots\dots$

$250 + 57 + 25 = \dots\dots\dots$

$728 - 68 = \dots\dots\dots$

$140 + 59 + 320 = \dots\dots\dots$

$508 - 168 = \dots\dots\dots$

$290 + 210 + 36 = \dots\dots\dots$

$437 - 267 = \dots\dots\dots$

$24 + 340 + 160 = \dots\dots\dots$

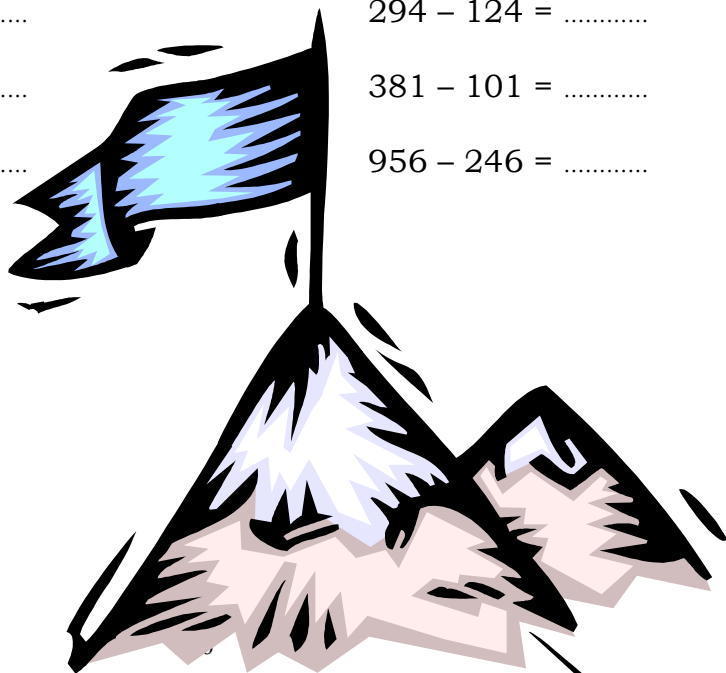
$294 - 124 = \dots\dots\dots$

$650 + 78 + 110 = \dots\dots\dots$

$381 - 101 = \dots\dots\dots$

$380 + 220 + 49 = \dots\dots\dots$

$956 - 246 = \dots\dots\dots$



Nom + prénom :

Objectif : *multiplier et diviser mentalement*

$25 \times 5 = \dots\dots\dots$

$75 : 3 = \dots\dots\dots$

$60 \times 8 = \dots\dots\dots$

$84 : 4 = \dots\dots\dots$

$41 \times 7 = \dots\dots\dots$

$105 : 5 = \dots\dots\dots$

$35 \times 4 = \dots\dots\dots$

$200 : 8 = \dots\dots\dots$

$99 \times 2 = \dots\dots\dots$

$88 : 22 = \dots\dots\dots$

$18 \times 5 = \dots\dots\dots$

$324 : 3 = \dots\dots\dots$

$75 \times 12 = \dots\dots\dots$

$160 : 10 = \dots\dots\dots$

$80 \times 11 = \dots\dots\dots$

$636 : 6 = \dots\dots\dots$

$40 \times 33 = \dots\dots\dots$

$96 : 4 = \dots\dots\dots$

$22 \times 4 = \dots\dots\dots$

$155 : 5 = \dots\dots\dots$

$25 \times 8 = \dots\dots\dots$

$448 : 4 = \dots\dots\dots$

$14 \times 15 = \dots\dots\dots$

$186 : 6 = \dots\dots\dots$

$145 \times 2 = \dots\dots\dots$

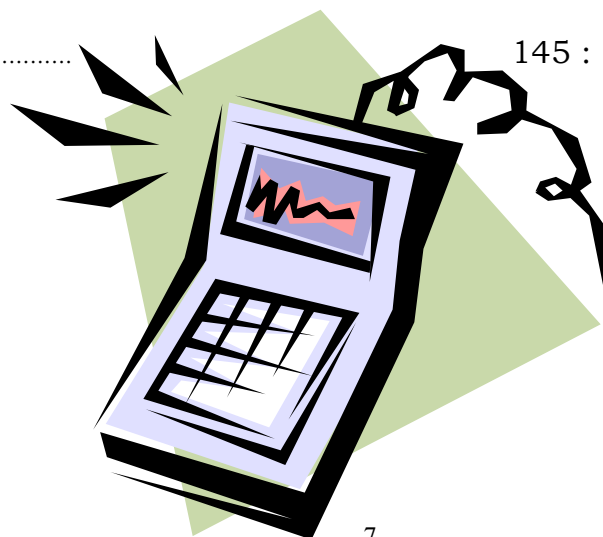
$945 : 9 = \dots\dots\dots$

$205 \times 3 = \dots\dots\dots$

$742 : 7 = \dots\dots\dots$

$81 \times 6 = \dots\dots\dots$

$145 : 5 = \dots\dots\dots$



Nom + prénom :

Objectif : *additionner et soustraire « en colonne »*

$$\begin{array}{r} 1472 \\ + 7365 \\ \hline \end{array}$$

.....

$$\begin{array}{r} 4197 \\ + 2854 \\ \hline \end{array}$$

.....

$$\begin{array}{r} 2285 \\ - 1385 \\ \hline \end{array}$$

.....

$$\begin{array}{r} 2087 \\ - 1087 \\ \hline \end{array}$$

.....

$$\begin{array}{r} 3765 \\ + 2908 \\ \hline \end{array}$$

.....

$$\begin{array}{r} 2855 \\ + 4462 \\ \hline \end{array}$$

.....

$$\begin{array}{r} 9149 \\ - 8839 \\ \hline \end{array}$$

.....

$$\begin{array}{r} 3987 \\ - 2964 \\ \hline \end{array}$$

.....

$$\begin{array}{r} 596 \\ \cdot 9 \\ \hline \end{array}$$

.....

$$\begin{array}{r} 152 \\ \cdot 7 \\ \hline \end{array}$$

.....

$$\begin{array}{r} 846 \\ \cdot 8 \\ \hline \end{array}$$

.....

$$\begin{array}{r} 856 \\ \cdot 6 \\ \hline \end{array}$$

.....

$$\begin{array}{r} 327 \\ \cdot 14 \\ \hline \end{array}$$

.....

.....

.....

$$\begin{array}{r} 549 \\ \cdot 21 \\ \hline \end{array}$$

.....

.....

.....

$$\begin{array}{r} 642 \\ \cdot 31 \\ \hline \end{array}$$

.....

.....

.....

$$\begin{array}{r} 571 \\ \cdot 45 \\ \hline \end{array}$$

.....

.....

.....

$$\begin{array}{r} 682 \\ \cdot 37 \\ \hline \end{array}$$

.....

.....

.....

$$\begin{array}{r} 497 \\ \cdot 84 \\ \hline \end{array}$$

.....

.....

.....

$$\begin{array}{r} 227 \\ \cdot 49 \\ \hline \end{array}$$

.....

.....

.....

$$\begin{array}{r} 975 \\ \cdot 56 \\ \hline \end{array}$$

.....

.....

.....

Nom + prénom :

Objectif : *diviser mentalement*

$56 : 7 = \dots\dots\dots$

$81 : 9 = \dots\dots\dots$

$36 : 4 = \dots\dots\dots$

$72 : 12 = \dots\dots\dots$

$84 : 7 = \dots\dots\dots$

$250 : 5 = \dots\dots\dots$

$400 : 80 = \dots\dots\dots$

$360 : 3 = \dots\dots\dots$

$220 : 11 = \dots\dots\dots$

$680 : 2 = \dots\dots\dots$

$600 : 12 = \dots\dots\dots$

$450 : 90 = \dots\dots\dots$

$777 : 7 = \dots\dots\dots$

$300 : 6 = \dots\dots\dots$

$144 : 6 = \dots\dots\dots$

$842 : 2 = \dots\dots\dots$

$630 : 7 = \dots\dots\dots$

$99 : 3 = \dots\dots\dots$

$153 : 3 = \dots\dots\dots$

$972 : 9 = \dots\dots\dots$

$1000 : 8 = \dots\dots\dots$

$1500 : 5 = \dots\dots\dots$

$1600 : 40 = \dots\dots\dots$

$1800 : 20 = \dots\dots\dots$

$1440 : 12 = \dots\dots\dots$

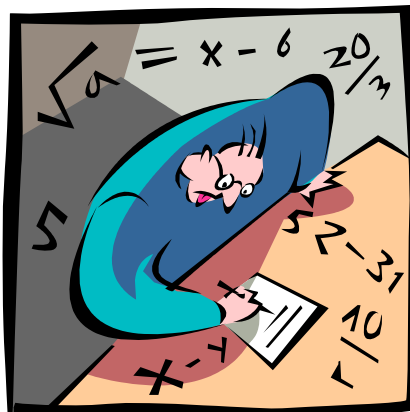
$750 : 30 = \dots\dots\dots$

$440 : 11 = \dots\dots\dots$

$625 : 25 = \dots\dots\dots$

$132 : 4 = \dots\dots\dots$

$600 : 8 = \dots\dots\dots$



Nom + prénom :

Objectif : résoudre des opérations difficiles.

Pose ces opérations pour les résoudre.

$7735 + 6251 = \dots\dots\dots$

$528 \times 32 = \dots\dots\dots$

$8029 + 4113 = \dots\dots\dots$

$708 \times 95 = \dots\dots\dots$

$3841 + 4459 = \dots\dots\dots$

$394 \times 86 = \dots\dots\dots$

$8477 - 6384 = \dots\dots\dots$

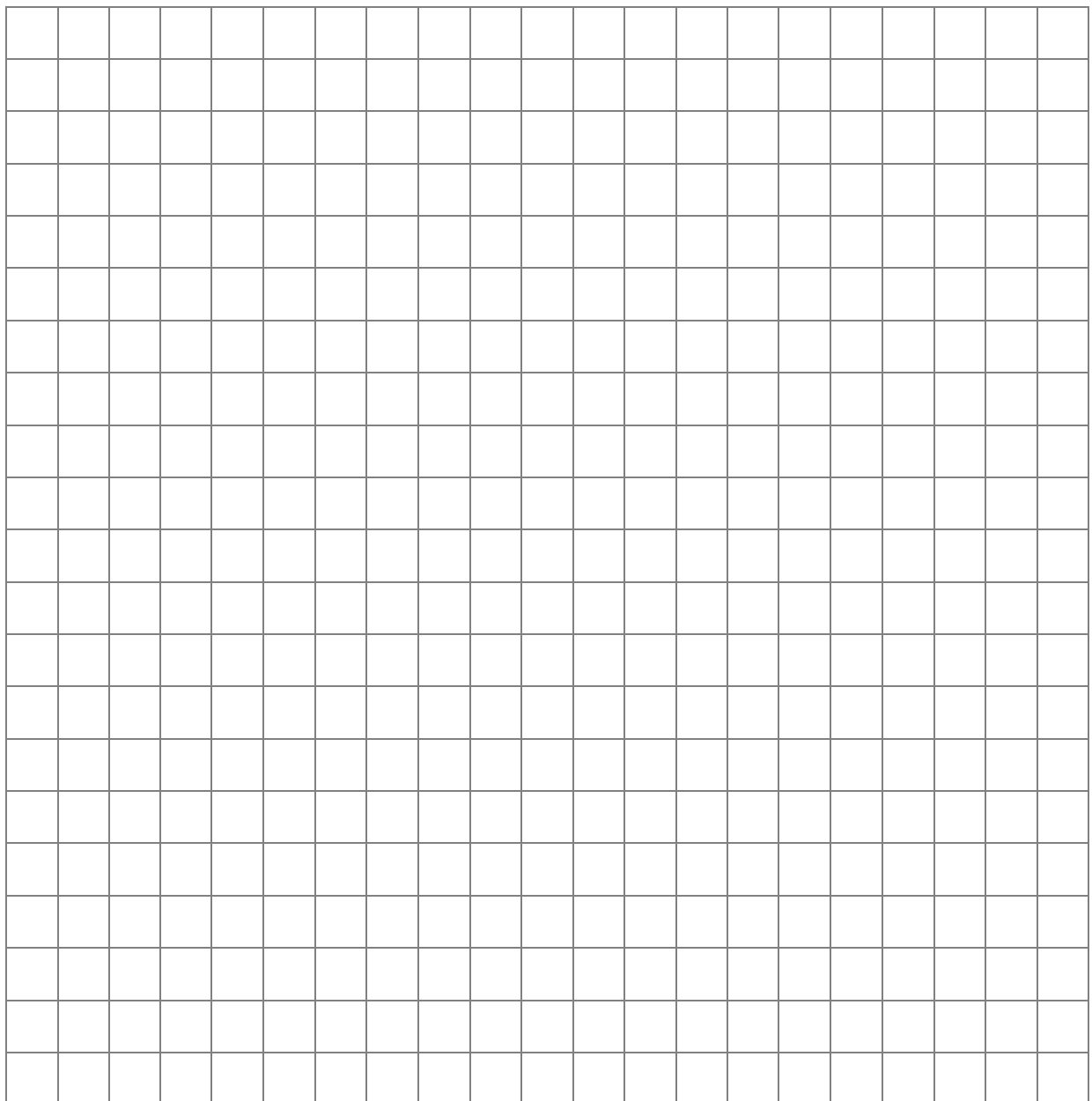
$7905 : 9 = \dots\dots\dots$

$6636 - 1892 = \dots\dots\dots$

$2148 : 6 = \dots\dots\dots$

$9187 - 5187 = \dots\dots\dots$

$2779 : 7 = \dots\dots\dots$



Nom+ prénom :

Objectif : résoudre des opérations difficiles.

Pose ces opérations pour les résoudre.

$5217 + 3384$

$6521 + 6892$

$5078 + 6942$

$9574 - 6385$

$8196 - 6573$

$6374 - 2879$

647×28

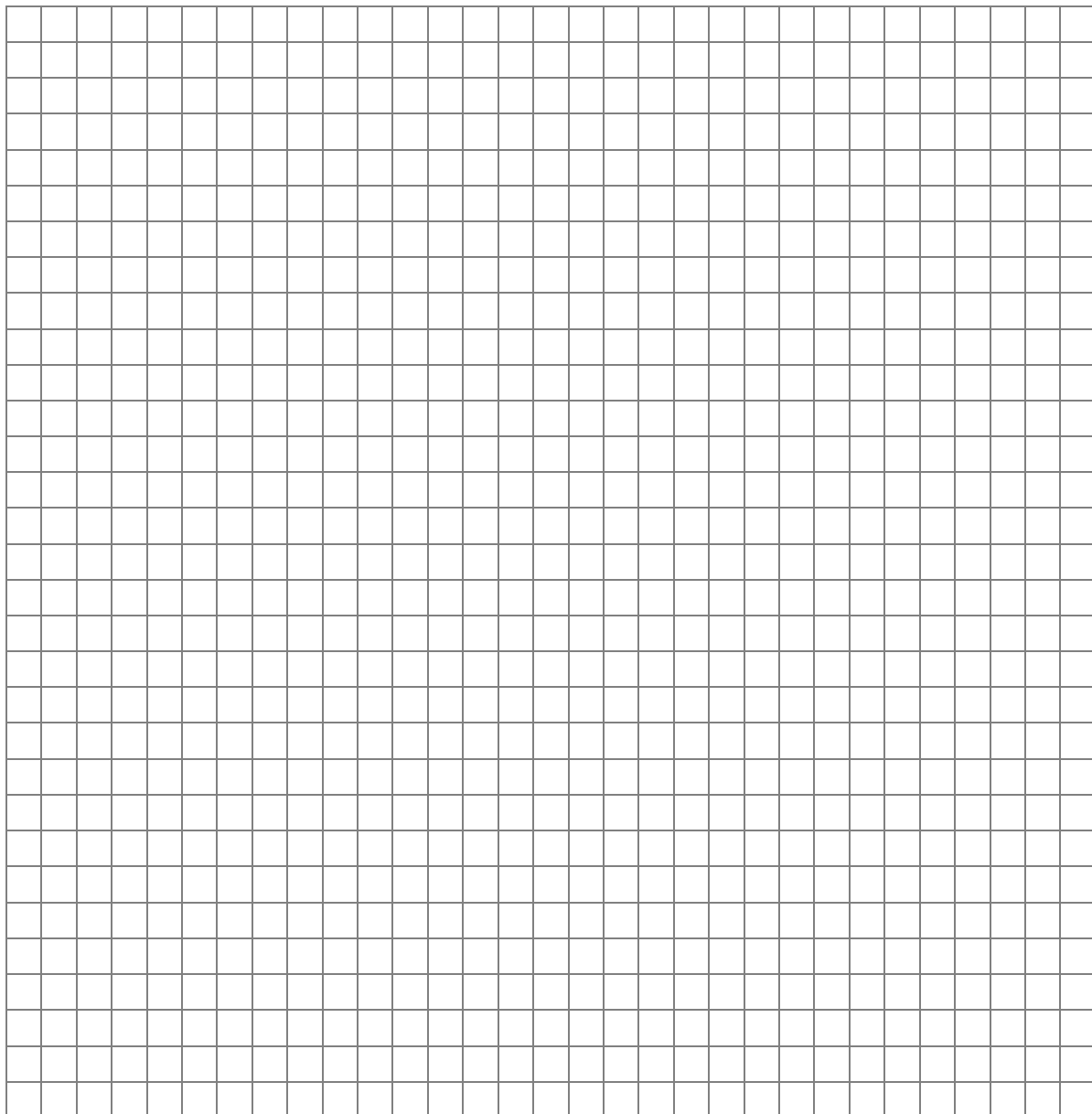
518×71

394×95

$2072 : 8$

$4456 : 7$

$4077 : 9$



Nom + prénom :

Objectif : résoudre des multiplications en colonne.

$$\begin{array}{r} 7215 \\ \times 53 \\ \hline \end{array}$$

.....
.....
.....

$$\begin{array}{r} 6871 \\ \times 64 \\ \hline \end{array}$$

.....
.....
.....

$$\begin{array}{r} 8249 \\ \times 19 \\ \hline \end{array}$$

.....
.....
.....

$$\begin{array}{r} 7183 \\ \times 38 \\ \hline \end{array}$$

.....
.....
.....

$$\begin{array}{r} 2378 \\ \times 87 \\ \hline \end{array}$$

.....
.....

$$\begin{array}{r} 9634 \\ \times 85 \\ \hline \end{array}$$

.....
.....
.....

$$\begin{array}{r} 8184 \\ \times 61 \\ \hline \end{array}$$

.....
.....
.....

$$\begin{array}{r} 3850 \\ \times 47 \\ \hline \end{array}$$

.....
.....
.....

$$\begin{array}{r} 9026 \\ \times 14 \\ \hline \end{array}$$

.....
.....
.....

$$\begin{array}{r} 7539 \\ \times 92 \\ \hline \end{array}$$

.....
.....

.....
Nom + prénom :

Objectif : résoudre des divisions en colonne.

$$\begin{array}{r|l} 8472 & \underline{12} \\ \hline \end{array}$$

$$\begin{array}{r|l} 5278 & \underline{9} \\ \hline \end{array}$$

$$\begin{array}{r|l} 7519 & \underline{4} \\ \hline \end{array}$$

$$\begin{array}{r|l} 9472 & \underline{15} \\ \hline \end{array}$$

$$\begin{array}{r|l} 3971 & \underline{7} \\ \hline \end{array}$$

$$\begin{array}{r|l} 4826 & \underline{6} \\ \hline \end{array}$$

$$\begin{array}{r|l} 9477 & \underline{11} \\ \hline \end{array}$$

$$\begin{array}{r|l} 8235 & \underline{9} \\ \hline \end{array}$$

$$\begin{array}{r|l} 9288 & \underline{5} \\ \hline \end{array}$$

$$\begin{array}{r|l} 2654 & \underline{18} \\ \hline \end{array}$$

$$\begin{array}{r|l} 5529 & \underline{8} \\ \hline \end{array}$$

$$\begin{array}{r|l} 5745 & \underline{9} \\ \hline \end{array}$$

Nom + prénom :

Objectif : résoudre des divisions en colonne.

$$\begin{array}{r|l} 3654 & \underline{12} \\ \hline & \end{array}$$

$$\begin{array}{r|l} 8962 & \underline{18} \\ \hline & \end{array}$$

$$\begin{array}{r|l} 9387 & \underline{14} \\ \hline & \end{array}$$

$$\begin{array}{r|l} 8776 & \underline{16} \\ \hline & \end{array}$$

$$\begin{array}{r|l} 8846 & \underline{11} \\ \hline & \end{array}$$

$$\begin{array}{r|l} 6432 & \underline{16} \\ \hline & \end{array}$$

$$\begin{array}{r|l} 8655 & \underline{11} \\ \hline & \end{array}$$

$$\begin{array}{r|l} 7638 & \underline{17} \\ \hline & \end{array}$$

$$\begin{array}{r|l} 9735 & \underline{15} \\ \hline & \end{array}$$

$$\begin{array}{r|l} 7936 & \underline{24} \\ \hline & \end{array}$$

$$\begin{array}{r|l} 5544 & \underline{22} \\ \hline & \end{array}$$

$$\begin{array}{r|l} 7643 & \underline{19} \\ \hline & \end{array}$$

Nom + prénom :

Objectif : *additionner 2 codes à virgules.*

$13,2 + 12,4 = \dots\dots\dots$

$10,5 + 11,5 = \dots\dots\dots$

$25,1 + 2,5 = \dots\dots\dots$

$21,7 + 14,3 = \dots\dots\dots$

$14,4 + 5,5 = \dots\dots\dots$

$16,4 + 21,6 = \dots\dots\dots$

$31,8 + 6,1 = \dots\dots\dots$

$12,9 + 22,1 = \dots\dots\dots$

$23,3 + 12,4 = \dots\dots\dots$

$33,2 + 24,8 = \dots\dots\dots$

$11,4 + 24,1 = \dots\dots\dots$

$11,8 + 11,4 = \dots\dots\dots$

$20,3 + 20,6 = \dots\dots\dots$

$15,6 + 16,7 = \dots\dots\dots$

$10,5 + 24,2 = \dots\dots\dots$

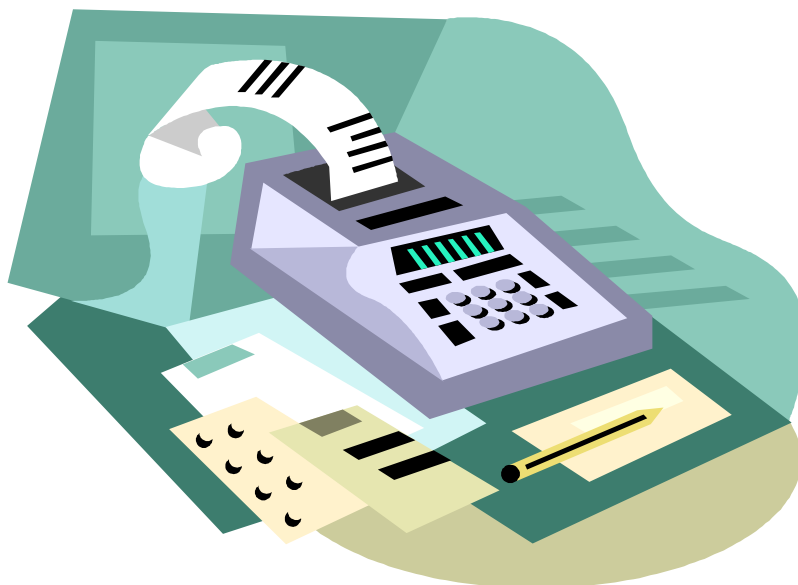
$18,7 + 5,8 = \dots\dots\dots$

$15,6 + 14,1 = \dots\dots\dots$

$24,9 + 3,5 = \dots\dots\dots$

$32,4 + 12,5 = \dots\dots\dots$

$31,8 + 12,8 = \dots\dots\dots$



Nom + prénom :

Objectif : *additionner 2 codes à virgules.*

$26,3 + 14,5 = \dots\dots\dots$

$41,2 + 23,8 = \dots\dots\dots$

$18,6 + 24,2 = \dots\dots\dots$

$45,6 + 10,7 = \dots\dots\dots$

$26,1 + 15,3 = \dots\dots\dots$

$28,9 + 29,8 = \dots\dots\dots$

$27,8 + 18,5 = \dots\dots\dots$

$17,7 + 71,5 = \dots\dots\dots$

$33,4 + 12,8 = \dots\dots\dots$

$36,5 + 28,7 = \dots\dots\dots$

$17,8 + 29,9 = \dots\dots\dots$

$22,4 + 32,8 = \dots\dots\dots$

$12,4 + 12,9 = \dots\dots\dots$

$31,8 + 10,2 = \dots\dots\dots$

$25,6 + 15,6 = \dots\dots\dots$

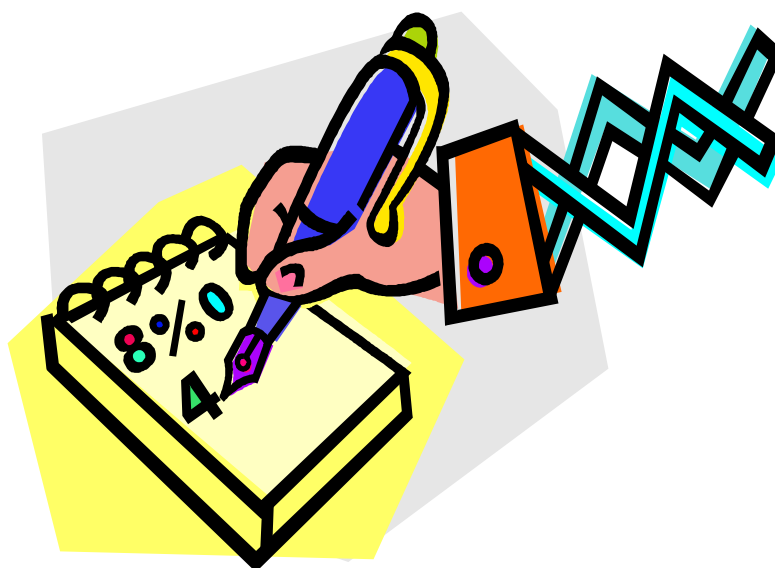
$20,2 + 39,8 = \dots\dots\dots$

$31,4 + 32,4 = \dots\dots\dots$

$34,5 + 44,6 = \dots\dots\dots$

$36,6 + 15,5 = \dots\dots\dots$

$38,3 + 24,6 = \dots\dots\dots$



Nom + prénom :

Objectif : *additionner 2 codes à virgules.*

$75,4 + 23,5 = \dots\dots\dots$

$52,6 + 47,3 = \dots\dots\dots$

$29,4 + 58,6 = \dots\dots\dots$

$36,8 + 78,2 = \dots\dots\dots$

$34,8 + 67,2 = \dots\dots\dots$

$29,1 + 54,8 = \dots\dots\dots$

$33,5 + 45,9 = \dots\dots\dots$

$32,7 + 25,9 = \dots\dots\dots$

$32,4 + 59,9 = \dots\dots\dots$

$65,7 + 48,3 = \dots\dots\dots$

$14,8 + 87,9 = \dots\dots\dots$

$32,5 + 36,8 = \dots\dots\dots$

$32,5 + 34,8 = \dots\dots\dots$

$37,4 + 81,2 = \dots\dots\dots$

$24,1 + 85,6 = \dots\dots\dots$

$77,2 + 34,6 = \dots\dots\dots$

$23,9 + 54,6 = \dots\dots\dots$

$28,9 + 38,7 = \dots\dots\dots$

$64,2 + 64,3 = \dots\dots\dots$

$29,4 + 65,3 = \dots\dots\dots$



Nom + prénom :

Objectif : *additionner 2 codes à virgules.*

$28,3 + 34,6 = \dots\dots\dots$

$17,6 + 83,2 = \dots\dots\dots$

$45,8 + 63,2 = \dots\dots\dots$

$29,4 + 57,3 = \dots\dots\dots$

$71,5 + 18,3 = \dots\dots\dots$

$41,6 + 38,6 = \dots\dots\dots$

$53,9 + 27,8 = \dots\dots\dots$

$50,7 + 51,3 = \dots\dots\dots$

$32,8 + 39,4 = \dots\dots\dots$

$38,9 + 39,8 = \dots\dots\dots$

$37,6 + 48,9 = \dots\dots\dots$

$24,6 + 48,8 = \dots\dots\dots$

$58,4 + 36,9 = \dots\dots\dots$

$36,9 + 42,5 = \dots\dots\dots$

$47,6 + 60,2 = \dots\dots\dots$

$38,4 + 59,6 = \dots\dots\dots$

$75,6 + 21,9 = \dots\dots\dots$

$27,6 + 65,1 = \dots\dots\dots$

$43,5 + 22,8 = \dots\dots\dots$

$32,9 + 12,8 = \dots\dots\dots$

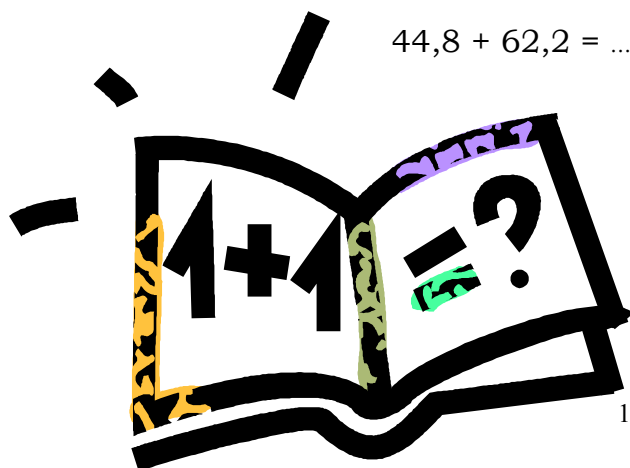
$54,8 + 65,1 = \dots\dots\dots$

$75,6 + 35,4 = \dots\dots\dots$

$29,1 + 70,8 = \dots\dots\dots$

$31,8 + 72,4 = \dots\dots\dots$

$44,8 + 62,2 = \dots\dots\dots$



Nom + prénom :

Objectif : soustraire 2 codes à virgules.

$37,6 - 21,1 = \dots\dots\dots$

$57,3 - 14,6 = \dots\dots\dots$

$44,9 - 12,8 = \dots\dots\dots$

$63,1 - 32,9 = \dots\dots\dots$

$55,4 - 22,3 = \dots\dots\dots$

$59,3 - 18,7 = \dots\dots\dots$

$84,7 - 51,3 = \dots\dots\dots$

$45,7 - 31,9 = \dots\dots\dots$

$69,2 - 41,2 = \dots\dots\dots$

$69,4 - 35,8 = \dots\dots\dots$

$36,5 - 12,9 = \dots\dots\dots$

$45,9 - 28,3 = \dots\dots\dots$

$18,3 - 13,7 = \dots\dots\dots$

$74,2 - 29,1 = \dots\dots\dots$

$31,2 - 10,8 = \dots\dots\dots$

$66,8 - 57,2 = \dots\dots\dots$

$28,6 - 14,9 = \dots\dots\dots$

$52,7 - 19,6 = \dots\dots\dots$

$31,1 - 11,4 = \dots\dots\dots$

$24,4 - 16,2 = \dots\dots\dots$

$75,6 - 28,1 = \dots\dots\dots$

$83,9 - 48,2 = \dots\dots\dots$

$57,6 - 19,3 = \dots\dots\dots$

$62,8 - 19,6 = \dots\dots\dots$

$81,6 - 47,3 = \dots\dots\dots$



Nom + prénom :

Objectif : soustraire mentalement 2 codes à virgules.

$45,3 - 27,9 = \dots\dots\dots$

$66,9 - 21,4 = \dots\dots\dots$

$82,9 - 15,3 = \dots\dots\dots$

$65,3 - 41,2 = \dots\dots\dots$

$47,3 - 35,6 = \dots\dots\dots$

$85,2 - 40,1 = \dots\dots\dots$

$96,1 - 27,5 = \dots\dots\dots$

$39,1 - 22,8 = \dots\dots\dots$

$58,4 - 28,6 = \dots\dots\dots$

$36,8 - 24,8 = \dots\dots\dots$

$74,6 - 58,3 = \dots\dots\dots$

$55,2 - 34,8 = \dots\dots\dots$

$46,9 - 12,7 = \dots\dots\dots$

$26,9 - 17,8 = \dots\dots\dots$

$36,8 - 24,5 = \dots\dots\dots$

$84,9 - 83,6 = \dots\dots\dots$

$81,6 - 47,2 = \dots\dots\dots$

$71,2 - 36,7 = \dots\dots\dots$

$88,4 - 63,7 = \dots\dots\dots$

$48,6 - 21,5 = \dots\dots\dots$

$52,9 - 14,8 = \dots\dots\dots$

$33,6 - 22,8 = \dots\dots\dots$

$95,7 - 25,8 = \dots\dots\dots$

$32,8 - 28,9 = \dots\dots\dots$

$99,2 - 48,7 = \dots\dots\dots$



Nom + prénom :

Objectif : soustraire mentalement 2 codes à virgules.

$50,3 - 20,9 = \dots\dots\dots$

$100,6 - 50,7 = \dots\dots\dots$

$70,8 - 30,1 = \dots\dots\dots$

$130,7 - 30,9 = \dots\dots\dots$

$60,1 - 50,8 = \dots\dots\dots$

$120,8 - 80,7 = \dots\dots\dots$

$30,6 - 10,4 = \dots\dots\dots$

$150,9 - 60,3 = \dots\dots\dots$

$80,6 - 40,9 = \dots\dots\dots$

$110,6 - 70,8 = \dots\dots\dots$

$50,3 - 30,5 = \dots\dots\dots$

$140,9 - 60,8 = \dots\dots\dots$

$60,8 - 40,9 = \dots\dots\dots$

$130,2 - 80,6 = \dots\dots\dots$

$80,5 - 40,1 = \dots\dots\dots$

$150,1 - 70,8 = \dots\dots\dots$

$60,9 - 30,4 = \dots\dots\dots$

$130,6 - 40,8 = \dots\dots\dots$

$80,6 - 20,7 = \dots\dots\dots$

$180,9 - 90,1 = \dots\dots\dots$

$90,7 - 30,9 = \dots\dots\dots$

$120,2 - 50,8 = \dots\dots\dots$

$50,4 - 30,2 = \dots\dots\dots$

$140,8 - 60,9 = \dots\dots\dots$

$80,1 - 60,5 = \dots\dots\dots$

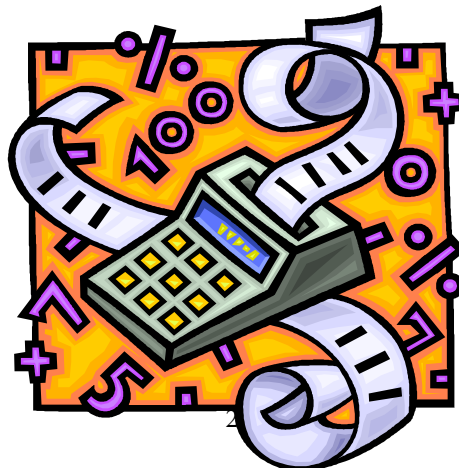
$120,4 - 70,6 = \dots\dots\dots$

$30,2 - 20,7 = \dots\dots\dots$

$160,7 - 90,8 = \dots\dots\dots$

$70,5 - 40,9 = \dots\dots\dots$

$140,6 - 50,9 = \dots\dots\dots$



Nom + prénom :

Objectif : soustraire mentalement 2 codes à virgules.

$87,3 - 21,9 = \dots\dots\dots$

$95,6 - 12,7 = \dots\dots\dots$

$65,3 - 48,9 = \dots\dots\dots$

$35,4 - 15,3 = \dots\dots\dots$

$71,6 - 42,9 = \dots\dots\dots$

$84,2 - 63,7 = \dots\dots\dots$

$81,2 - 77,1 = \dots\dots\dots$

$77,4 - 68,9 = \dots\dots\dots$

$44,9 - 25,3 = \dots\dots\dots$

$20,7 - 18,9 = \dots\dots\dots$

$51,8 - 36,7 = \dots\dots\dots$

$84,1 - 29,6 = \dots\dots\dots$

$84,9 - 26,7 = \dots\dots\dots$

$99,3 - 71,2 = \dots\dots\dots$

$74,2 - 61,8 = \dots\dots\dots$

$62,8 - 40,7 = \dots\dots\dots$

$83,4 - 60,8 = \dots\dots\dots$

$33,8 - 16,7 = \dots\dots\dots$

$44,8 - 29,6 = \dots\dots\dots$

$89,6 - 75,3 = \dots\dots\dots$

$66,8 - 14,7 = \dots\dots\dots$

$43,6 - 22,9 = \dots\dots\dots$

$96,2 - 45,8 = \dots\dots\dots$

$68,7 - 63,8 = \dots\dots\dots$

$81,2 - 36,9 = \dots\dots\dots$

$71,9 - 33,4 = \dots\dots\dots$

$74,5 - 22,1 = \dots\dots\dots$

$81,1 - 52,9 = \dots\dots\dots$

$63,9 - 22,8 = \dots\dots\dots$

$30,7 - 15,4 = \dots\dots\dots$



Nom + prénom :

Date :

EVALUATION FORMATIVE DE CALCUL – 5P

Objectif : soustraire mentalement 2 codes à virgules.

Durée : 15 minutes

$17,3 + 14,7 = \dots\dots\dots$

$16,5 + 35,8 = \dots\dots\dots$

$29,4 - 14,8 = \dots\dots\dots$

$38,3 - 24,5 = \dots\dots\dots$

$12,5 + 13,9 = \dots\dots\dots$

$34,5 + 29,9 = \dots\dots\dots$

$26,9 - 17,3 = \dots\dots\dots$

$44,2 - 18,8 = \dots\dots\dots$

$28,5 + 18,6 = \dots\dots\dots$

$56,2 + 17,4 = \dots\dots\dots$

$31,2 - 14,1 = \dots\dots\dots$

$39,4 - 23,8 = \dots\dots\dots$

$44,6 + 17,3 = \dots\dots\dots$

$67,1 + 24,9 = \dots\dots\dots$

$50,3 - 34,5 = \dots\dots\dots$

$88,5 - 71,7 = \dots\dots\dots$

$42,8 + 18,2 = \dots\dots\dots$

$68,7 + 45,9 = \dots\dots\dots$

$71,3 - 11,4 = \dots\dots\dots$

$94,2 - 45,8 = \dots\dots\dots$

$34,8 + 77,3 = \dots\dots\dots$

$98,2 - 19,6 = \dots\dots\dots$

$84,7 + 36,6 = \dots\dots\dots$

$78,1 - 48,1 = \dots\dots\dots$

$66,2 + 65,9 = \dots\dots\dots$

Calculs justes :/25

Note :

Nom + prénom :

Objectif : *additionner mentalement 2 codes à virgules.*

$2,24 + 4,13 = \dots\dots\dots$

$5,78 + 6,23 = \dots\dots\dots$

$5,06 + 3,08 = \dots\dots\dots$

$9,64 + 3,54 = \dots\dots\dots$

$7,37 + 2,38 = \dots\dots\dots$

$7,85 + 5,35 = \dots\dots\dots$

$4,04 + 3,76 = \dots\dots\dots$

$8,88 + 6,47 = \dots\dots\dots$

$7,25 + 1,46 = \dots\dots\dots$

$9,56 + 4,78 = \dots\dots\dots$

$9,42 + 4,38 = \dots\dots\dots$

$8,68 + 9,26 = \dots\dots\dots$

$7,74 + 6,22 = \dots\dots\dots$

$5,15 + 7,94 = \dots\dots\dots$

$9,19 + 5,58 = \dots\dots\dots$

$6,08 + 7,93 = \dots\dots\dots$

$6,66 + 8,25 = \dots\dots\dots$

$9,19 + 9,89 = \dots\dots\dots$

$7,35 + 6,42 = \dots\dots\dots$

$2,87 + 7,98 = \dots\dots\dots$

$3,81 + 4,25 = \dots\dots\dots$

$8,81 + 9,75 = \dots\dots\dots$

$4,62 + 2,44 = \dots\dots\dots$

$6,83 + 5,77 = \dots\dots\dots$

$6,66 + 1,54 = \dots\dots\dots$

$9,69 + 8,74 = \dots\dots\dots$

$7,99 + 1,08 = \dots\dots\dots$

$4,99 + 5,72 = \dots\dots\dots$

$5,27 + 3,88 = \dots\dots\dots$

$9,76 + 8,85 = \dots\dots\dots$

Nom + prénom :

Objectif : soustraire mentalement 2 codes à virgules.



$1,25 - 1,10 = \dots\dots\dots$

$2,36 - 2,26 = \dots\dots\dots$

$3,68 - 3,55 = \dots\dots\dots$

$4,28 - 4,13 = \dots\dots\dots$

$5,75 - 5,24 = \dots\dots\dots$

$5,47 - 5,23 = \dots\dots\dots$

$6,84 - 6,35 = \dots\dots\dots$

$7,91 - 7,81 = \dots\dots\dots$

$8,64 - 8,32 = \dots\dots\dots$

$9,81 - 9,63 = \dots\dots\dots$

$5,84 - 2,61 = \dots\dots\dots$

$8,42 - 1,27 = \dots\dots\dots$

$6,74 - 3,51 = \dots\dots\dots$

$9,88 - 2,74 = \dots\dots\dots$

$7,49 - 5,37 = \dots\dots\dots$

$8,41 - 5,32 = \dots\dots\dots$

$9,48 - 1,39 = \dots\dots\dots$

$7,25 - 4,12 = \dots\dots\dots$

$5,68 - 4,21 = \dots\dots\dots$

$6,89 - 4,85 = \dots\dots\dots$

Nom + prénom :

Objectif : soustraire mentalement 2 codes à virgules.

$8,36 - 4,98 = \dots\dots\dots$

$4,52 - 3,68 = \dots\dots\dots$

$9,54 - 2,37 = \dots\dots\dots$

$7,41 - 5,84 = \dots\dots\dots$

$6,82 - 1,28 = \dots\dots\dots$

$9,74 - 5,69 = \dots\dots\dots$

$8,25 - 4,89 = \dots\dots\dots$

$7,12 - 4,68 = \dots\dots\dots$

$5,36 - 2,97 = \dots\dots\dots$

$7,42 - 1,89 = \dots\dots\dots$

$7,46 - 3,94 = \dots\dots\dots$

$8,56 - 2,39 = \dots\dots\dots$

$9,04 - 6,38 = \dots\dots\dots$

$7,28 - 3,69 = \dots\dots\dots$

$9,97 - 6,68 = \dots\dots\dots$

$6,08 - 1,87 = \dots\dots\dots$

$9,31 - 3,98 = \dots\dots\dots$

$6,28 - 4,79 = \dots\dots\dots$

$9,55 - 3,78 = \dots\dots\dots$

$7,72 - 1,08 = \dots\dots\dots$

$6,39 - 4,15 = \dots\dots\dots$

$3,15 - 1,87 = \dots\dots\dots$

$9,26 - 8,12 = \dots\dots\dots$

$8,74 - 3,98 = \dots\dots\dots$

$2,87 - 0,38 = \dots\dots\dots$

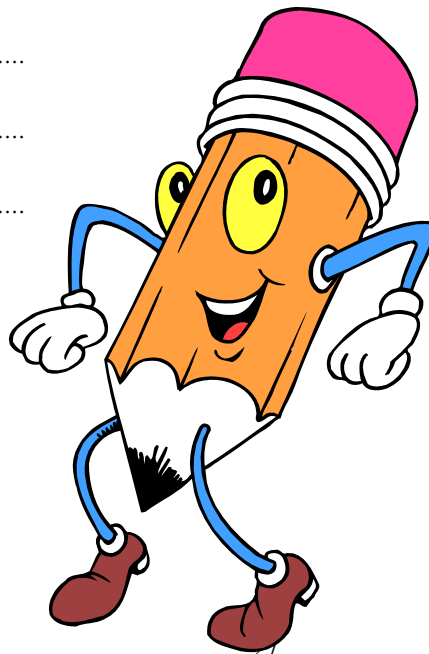
$9,68 - 1,81 = \dots\dots\dots$

$6,38 - 2,51 = \dots\dots\dots$

$3,95 - 1,78 = \dots\dots\dots$

$8,08 - 6,87 = \dots\dots\dots$

$9,84 - 5,97 = \dots\dots\dots$



Nom + prénom :

Objectif : soustraire mentalement 2 codes à virgules.

$8,36 - 2,95 = \dots\dots\dots$

$3,82 - 1,54 = \dots\dots\dots$

$6,38 - 4,29 = \dots\dots\dots$

$9,67 - 0,24 = \dots\dots\dots$

$7,60 - 1,36 = \dots\dots\dots$

$7,48 - 4,58 = \dots\dots\dots$

$9,64 - 3,28 = \dots\dots\dots$

$6,32 - 0,48 = \dots\dots\dots$

$8,76 - 4,28 = \dots\dots\dots$

$9,24 - 6,38 = \dots\dots\dots$

$2,87 - 1,45 = \dots\dots\dots$

$6,67 - 2,84 = \dots\dots\dots$

$3,96 - 2,80 = \dots\dots\dots$

$6,12 - 0,87 = \dots\dots\dots$

$6,58 - 2,98 = \dots\dots\dots$

$3,97 - 0,14 = \dots\dots\dots$

$3,77 - 1,58 = \dots\dots\dots$

$5,29 - 1,39 = \dots\dots\dots$

$9,94 - 1,98 = \dots\dots\dots$

$6,28 - 4,87 = \dots\dots\dots$

$6,63 - 4,84 = \dots\dots\dots$

$6,34 - 3,29 = \dots\dots\dots$

$8,95 - 2,37 = \dots\dots\dots$

$2,96 - 1,47 = \dots\dots\dots$

$4,85 - 1,27 = \dots\dots\dots$

$8,15 - 0,39 = \dots\dots\dots$

$6,63 - 2,21 = \dots\dots\dots$

$LE CALENDRIER PERPETUEL. 7,14 - 2,34 = \dots\dots\dots$

$9,56 - 1,87 = \dots\dots\dots$

$6,59 - 1,09 = \dots\dots\dots$



Nom + prénom :

Objectif : *additionner 2 codes à virgules.*

$4,36 + 2,69 = \dots\dots\dots$

$7,15 + 9,38 = \dots\dots\dots$

$8,45 + 1,65 = \dots\dots\dots$

$4,18 + 6,39 = \dots\dots\dots$

$4,42 + 5,96 = \dots\dots\dots$

$3,89 + 9,47 = \dots\dots\dots$

$9,52 + 7,63 = \dots\dots\dots$

$8,21 + 4,20 = \dots\dots\dots$

$7,79 + 9,24 = \dots\dots\dots$

$8,59 + 3,61 = \dots\dots\dots$

$2,51 + 6,98 = \dots\dots\dots$

$5,84 + 3,84 = \dots\dots\dots$

$8,25 + 7,45 = \dots\dots\dots$

$3,99 + 2,87 = \dots\dots\dots$

$7,48 + 9,24 = \dots\dots\dots$

$3,69 + 8,14 = \dots\dots\dots$

$8,88 + 2,57 = \dots\dots\dots$

$5,36 + 8,12 = \dots\dots\dots$

$9,24 + 7,15 = \dots\dots\dots$

$8,63 + 7,48 = \dots\dots\dots$

$4,19 + 6,85 = \dots\dots\dots$

$9,31 + 1,28 = \dots\dots\dots$

$4,78 + 3,68 = \dots\dots\dots$

$5,08 + 7,28 = \dots\dots\dots$

$3,65 + 2,85 = \dots\dots\dots$

$9,31 + 2,84 = \dots\dots\dots$

$5,55 + 7,75 = \dots\dots\dots$

$6,33 + 4,78 = \dots\dots\dots$

$9,01 + 9,02 = \dots\dots\dots$

$4,28 + 3,68 = \dots\dots\dots$



Nom + prénom :

Objectif : additionner et soustraire mentalement 2 codes à virgules.

$14,2 + 58,6 = \dots\dots\dots$

$77,2 + 14,5 = \dots\dots\dots$

$26,9 - 12,7 = \dots\dots\dots$

$33,4 - 11,6 = \dots\dots\dots$

$38,4 + 17,6 = \dots\dots\dots$

$63,4 + 28,7 = \dots\dots\dots$

$44,8 - 36,2 = \dots\dots\dots$

$55,2 - 36,1 = \dots\dots\dots$

$30,9 + 48,6 = \dots\dots\dots$

$45,2 + 16,7 = \dots\dots\dots$

$57,2 - 14,8 = \dots\dots\dots$

$87,6 - 44,1 = \dots\dots\dots$

$24,9 + 12,6 = \dots\dots\dots$

$36,9 + 55,2 = \dots\dots\dots$

$51,3 - 48,6 = \dots\dots\dots$

$84,5 - 16,3 = \dots\dots\dots$

$32,6 + 37,9 = \dots\dots\dots$

$74,4 + 13,6 = \dots\dots\dots$

$74,1 - 21,6 = \dots\dots\dots$

$99,2 - 45,5 = \dots\dots\dots$

$11,6 + 48,9 = \dots\dots\dots$

$82,3 - 49,6 = \dots\dots\dots$

$46,2 + 18,5 = \dots\dots\dots$

$78,2 - 16,9 = \dots\dots\dots$

$30,8 + 68,2 = \dots\dots\dots$

zzzz



Nom + Prénom :

Date :

EVALUATION FORMATIVE DE CALCUL – 5P

Objectif : *additionner et soustraire mentalement 2 codes à virgules*

Durée : 15 minutes

$16,4 + 25,3 = \dots\dots\dots$

$75,6 - 48,9 = \dots\dots\dots$

$77,1 + 19,3 = \dots\dots\dots$

$25,4 - 16,1 = \dots\dots\dots$

$48,7 + 26,9 = \dots\dots\dots$

$48,1 - 20,7 = \dots\dots\dots$

$37,5 + 26,4 = \dots\dots\dots$

$30,8 - 14,2 = \dots\dots\dots$

$42,3 + 18,6 = \dots\dots\dots$

$99,5 - 45,2 = \dots\dots\dots$

$1,36 + 4,58 = \dots\dots\dots$

$8,59 - 4,27 = \dots\dots\dots$

$2,61 + 3,84 = \dots\dots\dots$

$3,65 - 1,89 = \dots\dots\dots$

$4,02 + 1,96 = \dots\dots\dots$

$1,84 - 1,05 = \dots\dots\dots$

$7,14 + 2,35 = \dots\dots\dots$

$7,63 - 4,24 = \dots\dots\dots$

$5,87 + 2,03 = \dots\dots\dots$

$9,07 - 6,82 = \dots\dots\dots$

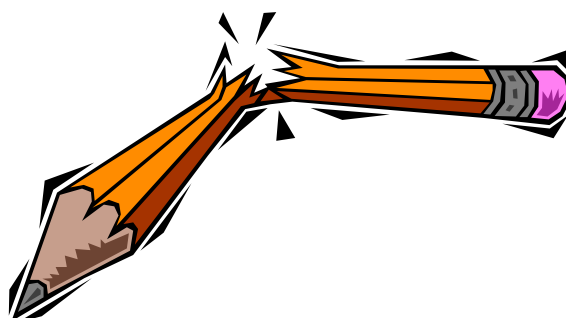
$13,9 + 44 = \dots\dots\dots$

$58 + 26,1 = \dots\dots\dots$

$50 - 14,8 = \dots\dots\dots$

$75,2 - 36 = \dots\dots\dots$

$36,1 - 28 = \dots\dots\dots$



Calculs justes :/25

Note :

Nom + prénom :

Objectif : additionner et soustraire mentalement 2 codes à virgules.

ACTIVITE DE REMEDIATION

$15,3 + 36,4 = \dots\dots\dots$

$5,26 - 1,84 = \dots\dots\dots$

$7,36 + 2,14 = \dots\dots\dots$

$90,2 - 45,3 = \dots\dots\dots$

$48,2 + 12,9 = \dots\dots\dots$

$4,85 - 1,26 = \dots\dots\dots$

$2,89 + 4,52 = \dots\dots\dots$

$51,2 - 40,9 = \dots\dots\dots$

$66,3 + 18,8 = \dots\dots\dots$

$9,25 - 4,75 = \dots\dots\dots$

$5,48 + 3,69 = \dots\dots\dots$

$87,5 - 36,9 = \dots\dots\dots$

$44,2 + 30,9 = \dots\dots\dots$

$2,87 - 1,53 = \dots\dots\dots$

$45,7 + 10,8 = \dots\dots\dots$

$48 - 15,6 = \dots\dots\dots$

$12,3 + 76 = \dots\dots\dots$

$14 - 4,25 = \dots\dots\dots$

$6,33 + 11 = \dots\dots\dots$

$79 - 45,6 = \dots\dots\dots$

$10,3 + 54 = \dots\dots\dots$

$25 - 8,95 = \dots\dots\dots$

$3,26 + 22 = \dots\dots\dots$

$14 - 7,84 = \dots\dots\dots$

$26 + 25,8 = \dots\dots\dots$

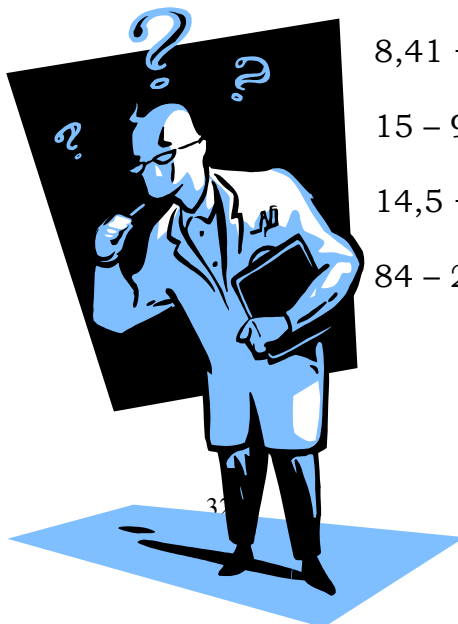
$84 - 39,5 = \dots\dots\dots$

$8,41 + 12 = \dots\dots\dots$

$15 - 9,36 = \dots\dots\dots$

$14,5 + 39 = \dots\dots\dots$

$84 - 26,7 = \dots\dots\dots$



Nom + prénom :

Objectif : additionner et soustraire mentalement 2 codes à virgules.

ACTIVITE DE RENFORCEMENT

$15,3 + 13,8 = \dots\dots\dots$

$1,25 + 2,65 = \dots\dots\dots$

$52,1 - 4,8 = \dots\dots\dots$

$7,48 - 2,12 = \dots\dots\dots$

$46,9 + 23,1 = \dots\dots\dots$

$4,59 + 3,81 = \dots\dots\dots$

$78,5 - 14,3 = \dots\dots\dots$

$5,57 - 2,38 = \dots\dots\dots$

$84,2 + 8,9 = \dots\dots\dots$

$6,62 + 2,75 = \dots\dots\dots$

$75,4 - 25,9 = \dots\dots\dots$

$9,05 - 2,14 = \dots\dots\dots$

$28,7 + 49,6 = \dots\dots\dots$

$2,50 + 4,86 = \dots\dots\dots$

$80,1 - 26,3 = \dots\dots\dots$

$7,11 - 3,65 = \dots\dots\dots$

$50,2 + 13,9 = \dots\dots\dots$

$5,54 + 2,39 = \dots\dots\dots$

$55,7 - 26,8 = \dots\dots\dots$

$8,79 - 1,24 = \dots\dots\dots$

$48,5 + 12,9 = \dots\dots\dots$

$8,96 - 4,57 = \dots\dots\dots$

$3,52 + 1,58 = \dots\dots\dots$

$78,9 - 14,6 = \dots\dots\dots$

$40,5 - 4,55 = \dots\dots\dots$



Nom + prénom :

Objectif : *additionner et soustraire des nombres entiers relatifs compris entre (-20) et (+20).*

$5 - 10 = \dots\dots\dots$

$-5 - 5 = \dots\dots\dots$

$10 - 10 = \dots\dots\dots$

$-5 + 10 = \dots\dots\dots$

$5 - -5 = \dots\dots\dots$

$3 - 6 = \dots\dots\dots$

$-3 + 6 = \dots\dots\dots$

$-3 - 6 = \dots\dots\dots$

$3 - -6 = \dots\dots\dots$

$-3 + -3 = \dots\dots\dots$

$8 - 5 = \dots\dots\dots$

$5 - 8 = \dots\dots\dots$

$-5 + 8 = \dots\dots\dots$

$-8 + 5 = \dots\dots\dots$

$3 - -5 = \dots\dots\dots$

$3 - 7 = \dots\dots\dots$

$-3 + 7 = \dots\dots\dots$

$-3 - 7 = \dots\dots\dots$

$-7 + 3 = \dots\dots\dots$

$7 - -3 = \dots\dots\dots$

$6 - 12 = \dots\dots\dots$

$-12 + 6 = \dots\dots\dots$

$-6 - -12 = \dots\dots\dots$

$-6 + 12 = \dots\dots\dots$

$-12 - 6 = \dots\dots\dots$



Nom + prénom :

Objectif : *additionner et soustraire des nombres entiers relatifs compris entre (- 20) et (+20).*

$7 - 8 = \dots\dots\dots$

$-7 - 8 = \dots\dots\dots$

$-7 - -8 = \dots\dots\dots$

$-8 + 7 = \dots\dots\dots$

$8 - -7 = \dots\dots\dots$

$9 - 9 = \dots\dots\dots$

$-9 + 9 = \dots\dots\dots$

$-9 - 9 = \dots\dots\dots$

$9 - -9 = \dots\dots\dots$

$-9 + -9 = \dots\dots\dots$

$6 - 8 = \dots\dots\dots$

$8 - 6 = \dots\dots\dots$

$-6 + 8 = \dots\dots\dots$

$-8 - 6 = \dots\dots\dots$

$-6 - -8 = \dots\dots\dots$

$3 + 9 = \dots\dots\dots$

$9 - 3 = \dots\dots\dots$

$3 - 9 = \dots\dots\dots$

$-3 + 9 = \dots\dots\dots$

$-9 + -3 = \dots\dots\dots$

$4 - 12 = \dots\dots\dots$

$-4 - 12 = \dots\dots\dots$

$12 - -4 = \dots\dots\dots$

$-12 - 4 = \dots\dots\dots$

$-4 - -12 = \dots\dots\dots$

$5 - 15 = \dots\dots\dots$

$-5 + 15 = \dots\dots\dots$

$15 - 5 = \dots\dots\dots$

$-5 - 15 = \dots\dots\dots$

$-15 + 5 = \dots\dots\dots$



Nom + prénom :

Objectif : *additionner et soustraire des nombres entiers relatifs compris entre (-30) et (+30).*

$18 - 8 = \dots\dots\dots$

$-8 + 18 = \dots\dots\dots$

$-18 + 8 = \dots\dots\dots$

$-18 - 8 = \dots\dots\dots$

$18 - -8 = \dots\dots\dots$

$11 - 19 = \dots\dots\dots$

$19 + -11 = \dots\dots\dots$

$-11 + 19 = \dots\dots\dots$

$-19 + -11 = \dots\dots\dots$

$-11 - 19 = \dots\dots\dots$

$15 + 9 = \dots\dots\dots$

$-9 + -15 = \dots\dots\dots$

$9 - 15 = \dots\dots\dots$

$-9 + 15 = \dots\dots\dots$

$-15 - 9 = \dots\dots\dots$

$-21 + 8 = \dots\dots\dots$

$8 - 21 = \dots\dots\dots$

$-8 + 21 = \dots\dots\dots$

$-8 - 21 = \dots\dots\dots$

$21 - 8 = \dots\dots\dots$

$14 - 14 = \dots\dots\dots$

$-14 - 14 = \dots\dots\dots$

$14 + 14 = \dots\dots\dots$

$-14 - -14 = \dots\dots\dots$

$14 + -14 = \dots\dots\dots$

$17 + -8 = \dots\dots\dots$

$-8 + 17 = \dots\dots\dots$

$-17 - -8 = \dots\dots\dots$

$-17 + -8 = \dots\dots\dots$

$8 - 17 = \dots\dots\dots$



Nom + prénom :

Objectif : *additionner et soustraire des nombres entiers relatifs compris entre (-30) et (+30).*

$12 - 12 = \dots\dots\dots$

$-12 + -12 = \dots\dots\dots$

$12 + 12 = \dots\dots\dots$

$-12 + 12 = \dots\dots\dots$

$-12 - -12 = \dots\dots\dots$

$-13 - 15 = \dots\dots\dots$

$-15 + 13 = \dots\dots\dots$

$13 + -15 = \dots\dots\dots$

$15 - -13 = \dots\dots\dots$

$-15 + -13 = \dots\dots\dots$

$17 - 6 = \dots\dots\dots$

$-17 - 6 = \dots\dots\dots$

$17 - -6 = \dots\dots\dots$

$6 - 17 = \dots\dots\dots$

$-6 - 17 = \dots\dots\dots$

$14 - 7 = \dots\dots\dots$

$-7 + 14 = \dots\dots\dots$

$7 - 14 = \dots\dots\dots$

$-14 - 7 = \dots\dots\dots$

$-7 - -14 = \dots\dots\dots$

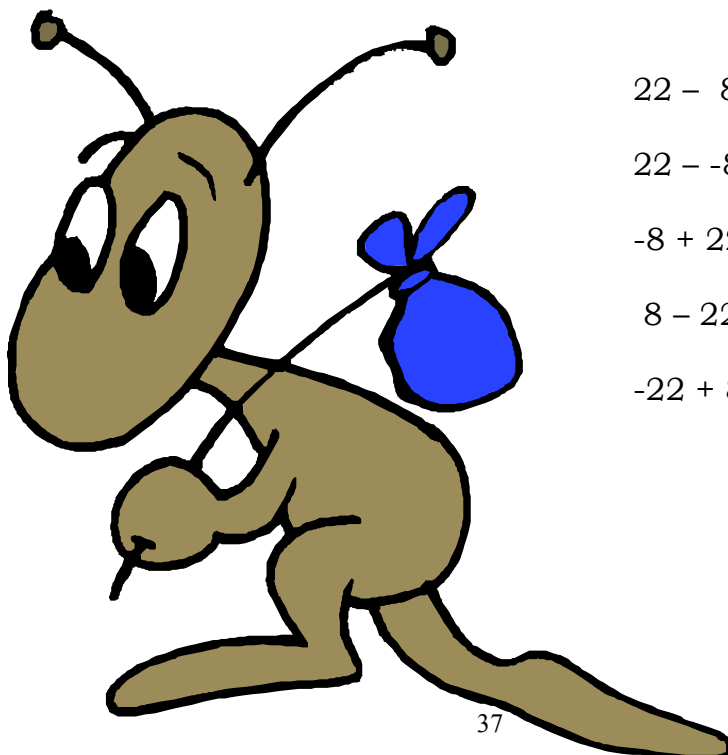
$22 - 8 = \dots\dots\dots$

$22 - -8 = \dots\dots\dots$

$-8 + 22 = \dots\dots\dots$

$8 - 22 = \dots\dots\dots$

$-22 + 8 = \dots\dots\dots$



Nom + prénom :

Objectif : *additionner et soustraire des nombres entiers relatifs compris entre (-40) et (+40).*

$28 - 12 = \dots\dots\dots$

$25 - 9 = \dots\dots\dots$

$-28 + 12 = \dots\dots\dots$

$-9 + 25 = \dots\dots\dots$

$-12 + 28 = \dots\dots\dots$

$-25 - 9 = \dots\dots\dots$

$-28 - 12 = \dots\dots\dots$

$25 - -9 = \dots\dots\dots$

$28 - -12 = \dots\dots\dots$

$9 - 25 = \dots\dots\dots$

$16 + 17 = \dots\dots\dots$

$14 + 23 = \dots\dots\dots$

$16 - 17 = \dots\dots\dots$

$-23 + 14 = \dots\dots\dots$

$-16 + 17 = \dots\dots\dots$

$-14 + -23 = \dots\dots\dots$

$-17 - 16 = \dots\dots\dots$

$23 - 14 = \dots\dots\dots$

$17 + 16 = \dots\dots\dots$

$14 - 23 = \dots\dots\dots$

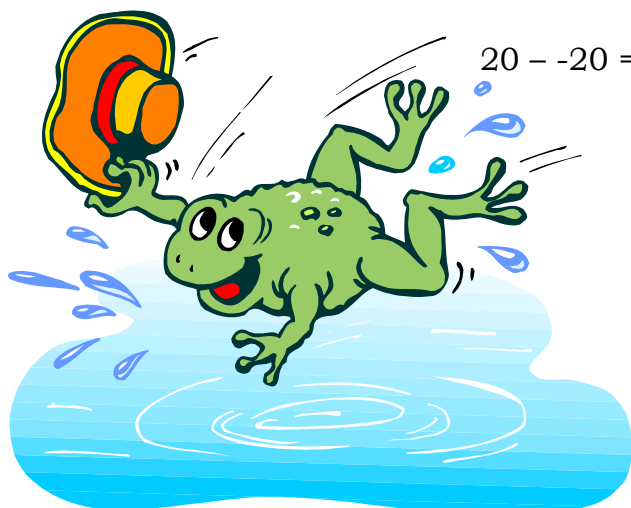
$20 - 20 = \dots\dots\dots$

$20 + 20 = \dots\dots\dots$

$-20 - 20 = \dots\dots\dots$

$-20 + 20 = \dots\dots\dots$

$20 - -20 = \dots\dots\dots$



Nom + prénom :

Objectif : *additionner et soustraire des nombres entiers relatifs compris entre (-50) et (+50).*

$$-32 - 10 = \dots\dots\dots$$

$$15 - 36 = \dots\dots\dots$$

$$25 + -16 = \dots\dots\dots$$

$$-14 - 18 = \dots\dots\dots$$

$$-30 + 19 = \dots\dots\dots$$

$$-28 - 12 = \dots\dots\dots$$

$$19 - 27 = \dots\dots\dots$$

$$33 - -9 = \dots\dots\dots$$

$$9 - 47 = \dots\dots\dots$$

$$11 + -28 = \dots\dots\dots$$

$$-25 + 16 = \dots\dots\dots$$

$$-31 - 15 = \dots\dots\dots$$

$$27 - 14 = \dots\dots\dots$$

$$17 - 34 = \dots\dots\dots$$

$$-36 + 4 = \dots\dots\dots$$

$$26 + 14 = \dots\dots\dots$$

$$-31 + 28 = \dots\dots\dots$$

$$-5 + 19 = \dots\dots\dots$$

$$28 - -7 = \dots\dots\dots$$

$$15 - 28 = \dots\dots\dots$$

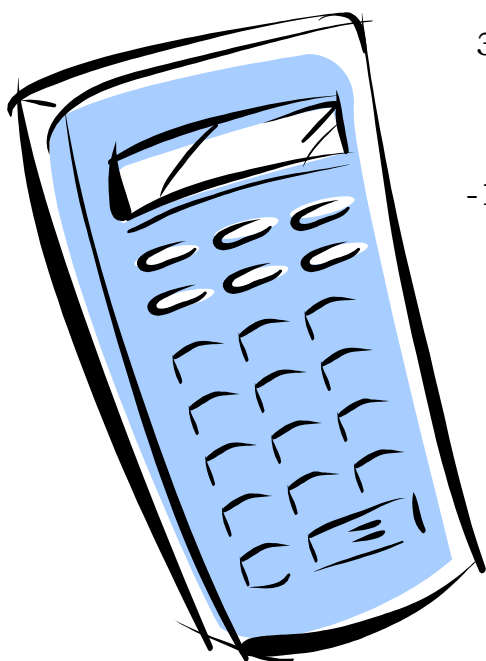
$$33 - 48 = \dots\dots\dots$$

$$-17 + 42 = \dots\dots\dots$$

$$36 - 36 = \dots\dots\dots$$

$$45 - -2 = \dots\dots\dots$$

$$-12 + 39 = \dots\dots\dots$$



Nom + prénom :

Objectif : *additionner et soustraire des nombres entiers relatifs compris entre (-60) et (+60).*

$47 - 23 = \dots\dots\dots$

$-24 + 39 = \dots\dots\dots$

$-15 + 42 = \dots\dots\dots$

$25 + -57 = \dots\dots\dots$

$34 - 56 = \dots\dots\dots$

$-13 + 57 = \dots\dots\dots$

$-12 - 43 = \dots\dots\dots$

$26 - 60 = \dots\dots\dots$

$25 + -39 = \dots\dots\dots$

$-21 + -38 = \dots\dots\dots$

$-25 - -18 = \dots\dots\dots$

$12 - 48 = \dots\dots\dots$

$33 - 18 = \dots\dots\dots$

$-23 + -26 = \dots\dots\dots$

$-41 + 31 = \dots\dots\dots$

$17 - -25 = \dots\dots\dots$

$-17 + -17 = \dots\dots\dots$

$-36 + 55 = \dots\dots\dots$

$45 - -12 = \dots\dots\dots$

$19 - 51 = \dots\dots\dots$

$54 - 60 = \dots\dots\dots$

$33 - 44 = \dots\dots\dots$

$-39 + 24 = \dots\dots\dots$

$-58 + 26 = \dots\dots\dots$

$-42 + 33 = \dots\dots\dots$

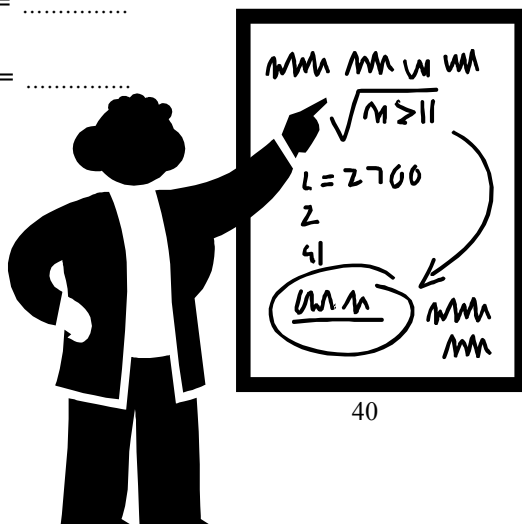
$10 - 25 = \dots\dots\dots$

$-28 - 31 = \dots\dots\dots$

$42 - -18 = \dots\dots\dots$

$-18 + 59 = \dots\dots\dots$

$-36 - -36 = \dots\dots\dots$



Nom + prénom :

Objectif : *additionner et soustraire des nombres entiers relatifs compris entre (-70) et (+70).*

$16 - 48 = \dots\dots\dots$

$-25 + 42 = \dots\dots\dots$

$31 - 39 = \dots\dots\dots$

$-12 - 49 = \dots\dots\dots$

$-45 + 23 = \dots\dots\dots$

$-26 - 44 = \dots\dots\dots$

$28 - 41 = \dots\dots\dots$

$-17 - 33 = \dots\dots\dots$

$43 + -26 = \dots\dots\dots$

$62 - 8 = \dots\dots\dots$

$65 - 24 = \dots\dots\dots$

$-36 + 48 = \dots\dots\dots$

$52 - -15 = \dots\dots\dots$

$-12 - 38 = \dots\dots\dots$

$19 + 47 = \dots\dots\dots$

$-55 + 12 = \dots\dots\dots$

$41 - 25 = \dots\dots\dots$

$31 - 38 = \dots\dots\dots$

$-6 + 53 = \dots\dots\dots$

$25 - 43 = \dots\dots\dots$

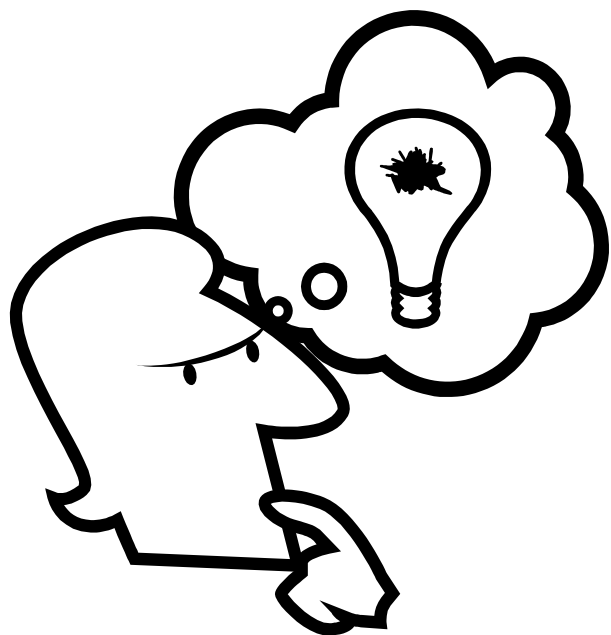
$13 - 48 = \dots\dots\dots$

$-26 + 39 = \dots\dots\dots$

$-59 + 7 = \dots\dots\dots$

$35 - 35 = \dots\dots\dots$

$29 + -13 = \dots\dots\dots$



Nom + prénom :

Objectif : *additionner et soustraire des nombres entiers relatifs compris entre (-80) et (+80).*

$61 - 28 = \dots\dots\dots$

$15 - 57 = \dots\dots\dots$

$-45 + 29 = \dots\dots\dots$

$-28 - 49 = \dots\dots\dots$

$33 - 72 = \dots\dots\dots$

$-17 + -52 = \dots\dots\dots$

$-36 + 58 = \dots\dots\dots$

$47 - 69 = \dots\dots\dots$

$-31 - 47 = \dots\dots\dots$

$28 + 49 = \dots\dots\dots$

$62 - -18 = \dots\dots\dots$

$-53 + 25 = \dots\dots\dots$

$14 - 60 = \dots\dots\dots$

$-12 - 59 = \dots\dots\dots$

$36 - 44 = \dots\dots\dots$

$63 - -7 = \dots\dots\dots$

$-50 + 36 = \dots\dots\dots$

$-14 - 47 = \dots\dots\dots$

$71 - -6 = \dots\dots\dots$

$8 - 68 = \dots\dots\dots$

$-25 - 52 = \dots\dots\dots$

$-39 + 41 = \dots\dots\dots$

$18 - 62 = \dots\dots\dots$

$-28 - 52 = \dots\dots\dots$

$36 - -44 = \dots\dots\dots$



Nom + prénom :

Objectif : *additionner et soustraire des nombres entiers relatifs compris entre (-90) et (+90).*

$$-77 + 52 = \dots\dots\dots$$

$$25 - 45 = \dots\dots\dots$$

$$31 - 58 = \dots\dots\dots$$

$$14 + -64 = \dots\dots\dots$$

$$-61 - 14 = \dots\dots\dots$$

$$-44 - 29 = \dots\dots\dots$$

$$17 - 52 = \dots\dots\dots$$

$$36 - -47 = \dots\dots\dots$$

$$24 + 48 = \dots\dots\dots$$

$$-13 - -47 = \dots\dots\dots$$

$$14 + -38 = \dots\dots\dots$$

$$23 - -54 = \dots\dots\dots$$

$$-28 - 61 = \dots\dots\dots$$

$$15 + -62 = \dots\dots\dots$$

$$17 - -73 = \dots\dots\dots$$

$$69 + -25 = \dots\dots\dots$$

$$41 - 48 = \dots\dots\dots$$

$$60 - 18 = \dots\dots\dots$$

$$-39 - 37 = \dots\dots\dots$$

$$10 - 75 = \dots\dots\dots$$

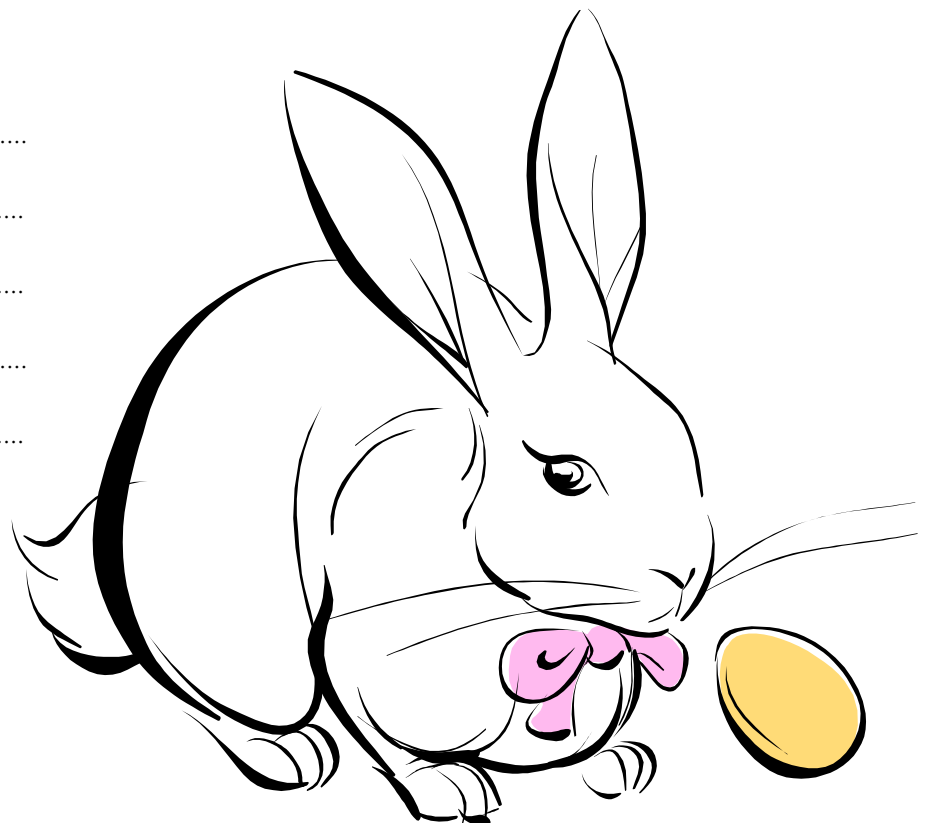
$$36 - -36 = \dots\dots\dots$$

$$-29 - 29 = \dots\dots\dots$$

$$14 - 75 = \dots\dots\dots$$

$$-26 + 62 = \dots\dots\dots$$

$$55 - 55 = \dots\dots\dots$$



Nom + Prénom :

Date :

EVALUATION FORMATIVE DE CALCUL – 5P

Objectif : additionner et soustraire mentalement 2 nombres entiers relatifs

Durée : 15 minutes

$16 - 24 = \dots\dots\dots$

$-25 + 50 = \dots\dots\dots$

$12 - -12 = \dots\dots\dots$

$45 - 20 = \dots\dots\dots$

$36 + -24 = \dots\dots\dots$

$64 + -32 = \dots\dots\dots$

$26 - 76 = \dots\dots\dots$

$14 + -34 = \dots\dots\dots$

$-62 + 18 = \dots\dots\dots$

$-27 + -53 = \dots\dots\dots$

$44 - 54 = \dots\dots\dots$

$13 + -59 = \dots\dots\dots$

$-39 + 39 = \dots\dots\dots$

$12 - 36 = \dots\dots\dots$

$-38 + -62 = \dots\dots\dots$

$37 - 47 = \dots\dots\dots$

$18 + 26 = \dots\dots\dots$

$-54 + 25 = \dots\dots\dots$

$76 + -10 = \dots\dots\dots$

$-83 - 17 = \dots\dots\dots$

$19 + -41 = \dots\dots\dots$

$22 - -38 = \dots\dots\dots$

$71 + 13 = \dots\dots\dots$

$67 - 14 = \dots\dots\dots$

$24 + -65 = \dots\dots\dots$



Calculs justes :/25

Note :

Nom + prénom :

Objectif : *additionner et soustraire des nombres entiers relatifs compris entre (-100) et (+100).*

$$-56 + 42 = \dots\dots\dots$$

$$31 - 64 = \dots\dots\dots$$

$$-14 + 75 = \dots\dots\dots$$

$$-23 - -65 = \dots\dots\dots$$

$$24 - 24 = \dots\dots\dots$$

$$48 + -36 = \dots\dots\dots$$

$$12 - 24 = \dots\dots\dots$$

$$72 + 20 = \dots\dots\dots$$

$$-82 + 42 = \dots\dots\dots$$

$$10 - 84 = \dots\dots\dots$$

$$33 + -66 = \dots\dots\dots$$

$$-25 + 25 = \dots\dots\dots$$

$$49 - 51 = \dots\dots\dots$$

$$22 + -48 = \dots\dots\dots$$

$$-15 + 73 = \dots\dots\dots$$

$$18 - -69 = \dots\dots\dots$$

$$34 + 15 = \dots\dots\dots$$

$$-55 + 25 = \dots\dots\dots$$

$$47 - -26 = \dots\dots\dots$$

$$78 + -12 = \dots\dots\dots$$

$$-89 + 8 = \dots\dots\dots$$

$$32 - 62 = \dots\dots\dots$$

$$17 + -38 = \dots\dots\dots$$

$$-45 + 45 = \dots\dots\dots$$

$$38 - -17 = \dots\dots\dots$$

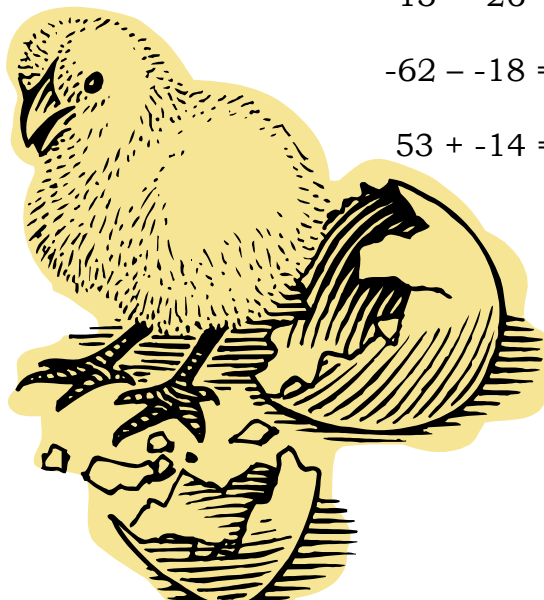
$$64 + 15 = \dots\dots\dots$$

$$-51 + 36 = \dots\dots\dots$$

$$-13 - -26 = \dots\dots\dots$$

$$-62 - -18 = \dots\dots\dots$$

$$53 + -14 = \dots\dots\dots$$



Nom + Prénom :

Date :

EVALUATION FORMATIVE DE CALCUL – 5P

Objectif : additionner et soustraire mentalement 2 nombres entiers relatifs

Durée : 15 minutes

$73 - -45 = \dots\dots\dots$

$-35 - 56 = \dots\dots\dots$

$-36 + 39 = \dots\dots\dots$

$-13 + 75 = \dots\dots\dots$

$44 - 88 = \dots\dots\dots$

$41 + -52 = \dots\dots\dots$

$-65 + -25 = \dots\dots\dots$

$38 - 32 = \dots\dots\dots$

$-18 + 78 = \dots\dots\dots$

$73 - -14 = \dots\dots\dots$

$33 - -49 = \dots\dots\dots$

$55 - 41 = \dots\dots\dots$

$48 + -35 = \dots\dots\dots$

$-41 + 55 = \dots\dots\dots$

$-43 - 25 = \dots\dots\dots$

$86 + -42 = \dots\dots\dots$

$72 - 84 = \dots\dots\dots$

$-32 + -25 = \dots\dots\dots$

$-46 + 95 = \dots\dots\dots$

$18 - 24 = \dots\dots\dots$

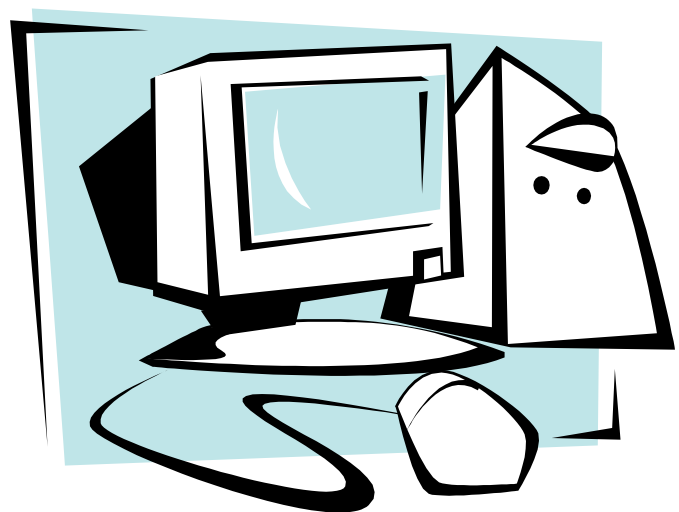
$73 + -24 = \dots\dots\dots$

$-66 + 32 = \dots\dots\dots$

$95 - 99 = \dots\dots\dots$

$-42 - 57 = \dots\dots\dots$

$-33 + 47 = \dots\dots\dots$



Calculs justes :/25

Note :

Nom + prénom :

Objectif : *multiplier des nombres entiers relatifs.*

$12 \times 4 = \dots\dots\dots$

$-6 \times 8 = \dots\dots\dots$

$15 \times -4 = \dots\dots\dots$

$-5 \times -5 = \dots\dots\dots$

$6 \times -6 = \dots\dots\dots$

$20 \times -4 = \dots\dots\dots$

$-3 \times -9 = \dots\dots\dots$

$25 \times -3 = \dots\dots\dots$

$-10 \times 8 = \dots\dots\dots$

$5 \times 60 = \dots\dots\dots$

$-15 \times 5 = \dots\dots\dots$

$-12 \times -12 = \dots\dots\dots$

$-8 \times 7 = \dots\dots\dots$

$-6 \times -6 = \dots\dots\dots$

$21 \times -3 = \dots\dots\dots$

$30 \times -20 = \dots\dots\dots$

$-80 \times -70 = \dots\dots\dots$

$-120 \times -5 = \dots\dots\dots$

$40 \times -60 = \dots\dots\dots$

$-80 \times -50 = \dots\dots\dots$

$16 \times 4 = \dots\dots\dots$

$-12 \times -3 = \dots\dots\dots$

$-3 \times 18 = \dots\dots\dots$

$9 \times -9 = \dots\dots\dots$

$10 \times -12 = \dots\dots\dots$

$-2 \times -17 = \dots\dots\dots$

$8 \times -7 = \dots\dots\dots$

$-45 \times -2 = \dots\dots\dots$

$9 \times 9 = \dots\dots\dots$

$-22 \times 4 = \dots\dots\dots$

$-6 \times -5 = \dots\dots\dots$

$-5 \times 12 = \dots\dots\dots$

$20 \times -7 = \dots\dots\dots$

$-19 \times 4 = \dots\dots\dots$

$-4 \times -9 = \dots\dots\dots$

$100 \times -2 = \dots\dots\dots$

$-30 \times 7 = \dots\dots\dots$

$25 \times -40 = \dots\dots\dots$

$-110 \times -7 = \dots\dots\dots$

$40 \times -70 = \dots\dots\dots$

Nom + prénom :

Objectif : multiplier et diviser des nombres entiers relatifs.

$120 \times -6 = \dots\dots\dots$

$-16 \times 5 = \dots\dots\dots$

$-70 \times -70 = \dots\dots\dots$

$11 \times -50 = \dots\dots\dots$

$-140 \times 2 = \dots\dots\dots$

$400 \times -5 = \dots\dots\dots$

$-25 \times -5 = \dots\dots\dots$

$33 \times -3 = \dots\dots\dots$

$-60 \times -60 = \dots\dots\dots$

$22 \times -4 = \dots\dots\dots$

$-190 \times 2 = \dots\dots\dots$

$13 \times -3 = \dots\dots\dots$

$-40 \times -50 = \dots\dots\dots$

$60 \times -120 = \dots\dots\dots$

$-24 \times -4 = \dots\dots\dots$

$75 : 5 = \dots\dots\dots$

$-24 : 4 = \dots\dots\dots$

$77 : -11 = \dots\dots\dots$

$-84 : 7 = \dots\dots\dots$

$-84 : -21 = \dots\dots\dots$

$60 : -15 = \dots\dots\dots$

$-150 : 30 = \dots\dots\dots$

$210 : -3 = \dots\dots\dots$

$-400 : -40 = \dots\dots\dots$

$720 : -12 = \dots\dots\dots$

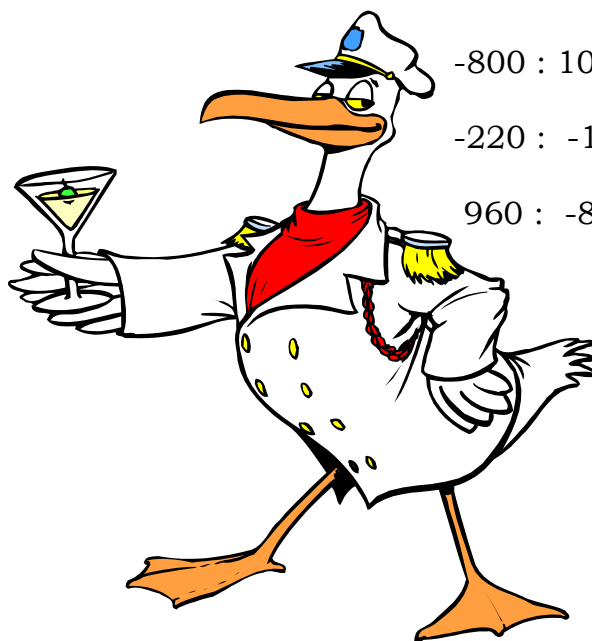
$320 : -80 = \dots\dots\dots$

$-420 : -70 = \dots\dots\dots$

$-800 : 100 = \dots\dots\dots$

$-220 : -11 = \dots\dots\dots$

$960 : -80 = \dots\dots\dots$



Nom + prénom :

Objectif : multiplier et diviser des nombres entiers relatifs.

$$-16 \times 4 = \dots\dots\dots$$

$$70 \times -120 = \dots\dots\dots$$

$$-30 \times -60 = \dots\dots\dots$$

$$25 \times 40 = \dots\dots\dots$$

$$-220 \times -3 = \dots\dots\dots$$

$$24 \times -30 = \dots\dots\dots$$

$$-8 \times 900 = \dots\dots\dots$$

$$-75 \times -20 = \dots\dots\dots$$

$$45 \times -20 = \dots\dots\dots$$

$$-80 \times -120 = \dots\dots\dots$$

$$30 \times -33 = \dots\dots\dots$$

$$-40 \times -120 = \dots\dots\dots$$

$$80 \times -80 = \dots\dots\dots$$

$$-20 \times 18 = \dots\dots\dots$$

$$-3 \times -17 = \dots\dots\dots$$

$$750 : -3 = \dots\dots\dots$$

$$-480 : -12 = \dots\dots\dots$$

$$360 : -60 = \dots\dots\dots$$

$$-1200 : 40 = \dots\dots\dots$$

$$630 : -30 = \dots\dots\dots$$

$$3600 : 90 = \dots\dots\dots$$

$$-840 : -120 = \dots\dots\dots$$

$$2500 : -5 = \dots\dots\dots$$

$$-1440 : -120 = \dots\dots\dots$$

$$-960 : 24 = \dots\dots\dots$$

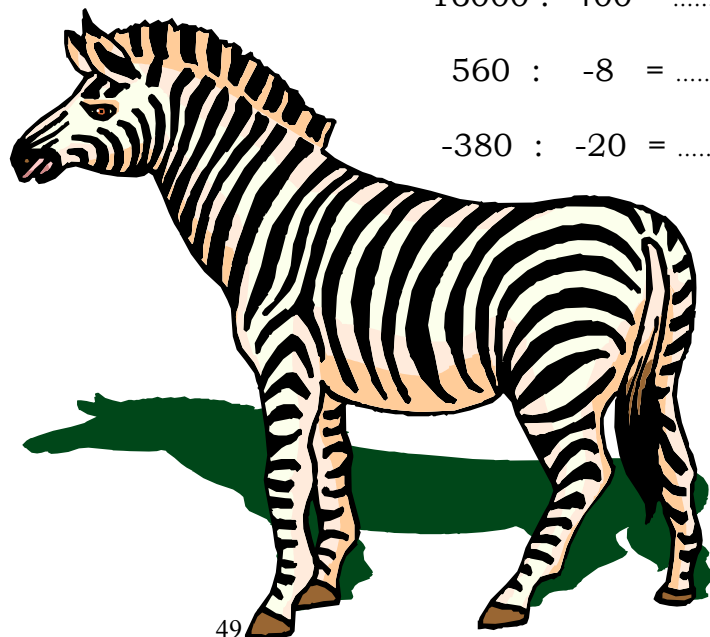
$$3200 : -80 = \dots\dots\dots$$

$$-1500 : 5 = \dots\dots\dots$$

$$16000 : -400 = \dots\dots\dots$$

$$560 : -8 = \dots\dots\dots$$

$$-380 : -20 = \dots\dots\dots$$



Nom + prénom :

Objectif : multiplier et diviser des nombres entiers relatifs.

$14 \times -20 = \dots\dots\dots$

$360 : -12 = \dots\dots\dots$

$24 \times -3 = \dots\dots\dots$

$-7500 : 500 = \dots\dots\dots$

$-2 \times -18 = \dots\dots\dots$

$-888 : -4 = \dots\dots\dots$

$14 \times -40 = \dots\dots\dots$

$7200 : -9 = \dots\dots\dots$

$-15 \times -15 = \dots\dots\dots$

$540 : -6 = \dots\dots\dots$

$144 : -12 = \dots\dots\dots$

$75 \times -2 = \dots\dots\dots$

$-150 : -15 = \dots\dots\dots$

$70 \times -80 = \dots\dots\dots$

$-660 : 20 = \dots\dots\dots$

$-40 \times -80 = \dots\dots\dots$

$4900 : -7 = \dots\dots\dots$

$-75 \times 40 = \dots\dots\dots$

$-6000 : -12 = \dots\dots\dots$

$12 \times -70 = \dots\dots\dots$

$25 \times -40 = \dots\dots\dots$

$76 : -4 = \dots\dots\dots$

$-130 \times -5 = \dots\dots\dots$

$-640 : -16 = \dots\dots\dots$

$111 \times -7 = \dots\dots\dots$

$990 : -11 = \dots\dots\dots$

$800 \times -3 = \dots\dots\dots$

$156 : -12 = \dots\dots\dots$

$-45 \times -40 = \dots\dots\dots$

$-4800 : -120 = \dots\dots\dots$



Nom + prénom :

Objectif : *multiplier et diviser des nombres entiers relatifs.*

$23 \times -30 = \dots\dots\dots$

$1400 : -70 = \dots\dots\dots$

$-45 \times 40 = \dots\dots\dots$

$-640 : -80 = \dots\dots\dots$

$80 \times -70 = \dots\dots\dots$

$-7200 : 12 = \dots\dots\dots$

$-60 \times -9 = \dots\dots\dots$

$6600 : -66 = \dots\dots\dots$

$-33 \times 30 = \dots\dots\dots$

$-1320 : 11 = \dots\dots\dots$

$-4 \times -19 = \dots\dots\dots$

$-12000 : 400 = \dots\dots\dots$

$50 \times -15 = \dots\dots\dots$

$30000 : -600 = \dots\dots\dots$

$-80 \times -90 = \dots\dots\dots$

$-8400 : 1200 = \dots\dots\dots$

$170 \times -2 = \dots\dots\dots$

$-5400 : -900 = \dots\dots\dots$

$35 \times -40 = \dots\dots\dots$

$-5600 : -70 = \dots\dots\dots$

$-40 \times -800 = \dots\dots\dots$

$6300 : -90 = \dots\dots\dots$

$150 \times -30 = \dots\dots\dots$

$-7600 : 4 = \dots\dots\dots$

$-90 \times 500 = \dots\dots\dots$

$-4400 : -100 = \dots\dots\dots$

$7000 \times -8 = \dots\dots\dots$

$18000 : -60 = \dots\dots\dots$

$-120 \times 120 = \dots\dots\dots$

$-2500 : -500 = \dots\dots\dots$

Nom + prénom :

Date :

EVALUATION FORMATIVE – 5P

Objectif : multiplier et diviser des nombres entiers relatifs.

Durée : 12 minutes

$-14 \times -5 = \dots\dots\dots$

$250 : -50 = \dots\dots\dots$

$80 \times -60 = \dots\dots\dots$

$-810 : -9 = \dots\dots\dots$

$-7 \times -900 = \dots\dots\dots$

$666 : -3 = \dots\dots\dots$

$120 \times -90 = \dots\dots\dots$

$840 : -120 = \dots\dots\dots$

$-23 \times -40 = \dots\dots\dots$

$-880 : -11 = \dots\dots\dots$

$-90 \times -500 = \dots\dots\dots$

$1400 : -70 = \dots\dots\dots$

$110 \times -30 = \dots\dots\dots$

$-1500 : -5 = \dots\dots\dots$

$-6 \times -400 = \dots\dots\dots$

$7500 : -30 = \dots\dots\dots$

$-20 \times -600 = \dots\dots\dots$

$-6000 : 30 = \dots\dots\dots$

$500 \times -12 = \dots\dots\dots$

$8000 : -200 = \dots\dots\dots$

$75 \times -40 = \dots\dots\dots$

$-6300 : -70 = \dots\dots\dots$

$190 \times -30 = \dots\dots\dots$

$1320 : -11 = \dots\dots\dots$

$-25 \times -500 = \dots\dots\dots$

Calculs réussis :/25

Appréciation :

Nom + prénom :

Objectif : multiplier et diviser des nombres entiers relatifs

ACTIVITE DE REMEDIATION

$$-12 \times -3 = \dots\dots\dots$$

$$260 : -13 = \dots\dots\dots$$

$$60 \times -30 = \dots\dots\dots$$

$$-720 : -8 = \dots\dots\dots$$

$$-7 \times -800 = \dots\dots\dots$$

$$-80 \times -600 = \dots\dots\dots$$

$$1200 : -60 = \dots\dots\dots$$

$$100 \times -80 = \dots\dots\dots$$

$$-2100 : -7 = \dots\dots\dots$$

$$-7 \times -400 = \dots\dots\dots$$

$$888 : -4 = \dots\dots\dots$$

$$110 \times -50 = \dots\dots\dots$$

$$960 : -120 = \dots\dots\dots$$

$$-25 \times -30 = \dots\dots\dots$$

$$-770 : -11 = \dots\dots\dots$$

$$1000 : -40 = \dots\dots\dots$$

$$-30 \times -500 = \dots\dots\dots$$

$$-8000 : 20 = \dots\dots\dots$$

$$700 \times -12 = \dots\dots\dots$$

$$3000 : -600 = \dots\dots\dots$$

$$40 \times -50 = \dots\dots\dots$$

$$-5600 : -70 = \dots\dots\dots$$

$$200 \times -50 = \dots\dots\dots$$

$$1200 : -12 = \dots\dots\dots$$

$$-50 \times -250 = \dots\dots\dots$$

Nom + prénom :

Objectif : résoudre des divisions en colonne.

$$\begin{array}{r|l} 38547 & 14 \\ \hline & \end{array}$$

$$\begin{array}{r|l} 67380 & 10 \\ \hline & \end{array}$$

$$\begin{array}{r|l} 47470 & 47 \\ \hline & \end{array}$$

$$\begin{array}{r|l} 71002 & 20 \\ \hline & \end{array}$$

$$\begin{array}{r|l} 76371 & 9 \\ \hline & \end{array}$$

$$\begin{array}{r|l} 15080 & 15 \\ \hline & \end{array}$$

$$\begin{array}{r|l} 63400 & 14 \\ \hline & \end{array}$$

$$\begin{array}{r|l} 300125 & 25 \\ \hline & \end{array}$$

$$\begin{array}{r|l} 50075 & 5 \\ \hline & \end{array}$$

$$\begin{array}{r|l} 63444 & 61 \\ \hline & \end{array}$$

$$\begin{array}{r|l} 20020 & 20 \\ \hline & \end{array}$$

$$\begin{array}{r|l} 75750 & 75 \\ \hline & \end{array}$$

Nom + prénom :

Objectif : résoudre des divisions en colonne.

$$\begin{array}{r|l} 80750 & 8 \\ \hline & \end{array}$$

$$\begin{array}{r|l} 75045 & 5 \\ \hline & \end{array}$$

$$\begin{array}{r|l} 67004 & 14 \\ \hline & \end{array}$$

$$\begin{array}{r|l} 56000 & 7 \\ \hline & \end{array}$$

$$\begin{array}{r|l} 64016 & 16 \\ \hline & \end{array}$$

$$\begin{array}{r|l} 52280 & 14 \\ \hline & \end{array}$$

$$\begin{array}{r|l} 60750 & 600 \\ \hline & \end{array}$$

$$\begin{array}{r|l} 70700 & 70 \\ \hline & \end{array}$$

$$\begin{array}{r|l} 80754 & 15 \\ \hline & \end{array}$$

$$\begin{array}{r|l} 88098 & 8 \\ \hline & \end{array}$$

$$\begin{array}{r|l} 71356 & 11 \\ \hline & \end{array}$$

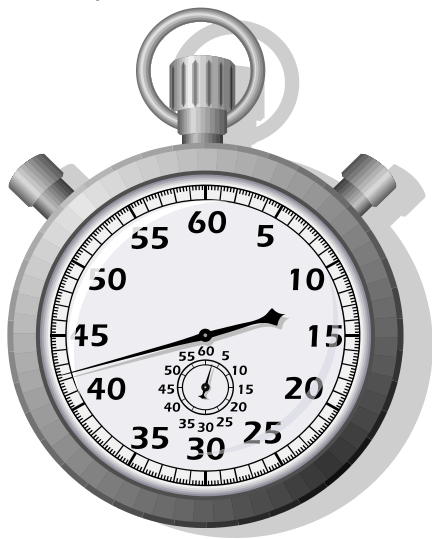
$$\begin{array}{r|l} 174562 & 17 \\ \hline & \end{array}$$

Nom + prénom :

CALCUL MENTAL

Arriveras-tu à effectuer les dix calculs suivants en moins de huit minutes sans rien écrire d'autre que les réponses ? Essaie !

Top chrono !



$$34 + 47 + 56 + 23 = \dots\dots\dots$$

$$137 - 67 = \dots\dots\dots$$

$$276 - 98 = \dots\dots\dots$$

$$36 \cdot 5 = \dots\dots\dots$$

$$14 \cdot 9 = \dots\dots\dots$$

$$205 \cdot 6 = \dots\dots\dots$$

$$25 \cdot 12 = \dots\dots\dots$$

$$4 \cdot 7 \cdot 25 = \dots\dots\dots$$

$$832 : 4 = \dots\dots\dots$$

$$2790 : 9 = \dots\dots\dots$$

Nom + prénom :

Date :

CALCUL MENTAL – REVISION 5P

Durée : 15 minutes

$$0,8 \times 0,9 = \dots\dots\dots$$

$$40 \times 0,1 = \dots\dots\dots$$

$$8 \times 0,9 = \dots\dots\dots$$

$$17,78 + \dots\dots\dots = 20$$

$$\dots\dots\dots \text{ pièces de } 50 \text{ ct} = 10 \text{ Fr}$$

$$30 \text{ pièces de } 20 \text{ ct} = \dots\dots\dots \text{ Fr}$$

$$100 \text{ pièces de } \dots\dots\dots \text{ ct} = 5 \text{ Fr}$$

$$18 \text{ h } 30 - 6 \text{ h } 30 = \dots\dots\dots \text{ h} \dots\dots\dots$$

$$10 \text{ h } 10 - 15 \text{ minutes} = \dots\dots\dots$$

$$16 \text{ h } 50 - \dots\dots\dots = 50 \text{ minutes}$$

$$8 \times 5,1 = \dots\dots\dots$$

$$19,9 + 19,9 + 19,9 = \dots\dots\dots$$

$$14,9 \times 10 = \dots\dots\dots$$

$$7,5 \times 8 = 15 \times \dots\dots\dots$$

$$997 - 6,99 = 1000 - \dots\dots\dots$$

$$997 + 6,99 = 1000 + \dots\dots\dots$$

$$60 : 5 = \dots\dots\dots : 10$$

Nom + prénom :

REVISION CM

$$86 \cdot 5 = 43 \cdot 2 \cdot \dots = 43 \cdot \dots = \dots$$

$$30 \cdot 150 = 45 \cdot \dots = \dots$$

$$32 \cdot 30 = (32 \cdot 3) \cdot \dots = \dots \cdot \dots = \dots$$

$$6 \cdot 9 \cdot 5 \cdot 10 = \dots \cdot \dots = \dots$$

$$99 \cdot 12 = 1200 - \dots = \dots$$

$$201 \cdot 30 = 6000 + \dots = \dots$$

$$39 \cdot 7 = (\dots \cdot 7) + (\dots \cdot 7) = \dots + \dots = \dots$$

$$\dots = 252 \cdot 3$$

$$5 \cdot 414 = \dots + 70 = \dots$$

$$960 = 8 \cdot \dots$$

$$9 \cdot 17 = (10 \cdot \dots) - (1 \cdot \dots) = \dots - \dots = \dots$$

$$100 \cdot (6 \cdot \dots) = 3600$$

$$435 - 85 = 400 - \dots = \dots$$

$$985 + 145 = 1000 + \dots = \dots$$

$$184 - 58 = \dots - 60 = \dots$$

Nom + prénom :

Date :

CALCUL MENTAL – REVISION 5P

Durée : 15 minutes

$$68 \cdot 50 = 34 \cdot 2 \cdot \dots = 34 \cdot \dots = \dots$$

$$40 \cdot 1500 = 60 \cdot \dots = \dots$$

$$55 \cdot 30 = (55 \cdot 3) \cdot \dots = \dots \cdot \dots = \dots$$

$$7 \cdot 4 \cdot 9 \cdot 25 = \dots \cdot \dots = \dots$$

$$99 \cdot 14 = 1400 - \dots = \dots$$

$$301 \cdot 40 = 12'000 + \dots = \dots$$

$$43 \cdot 8 = (\dots \cdot 8) + (\dots \cdot 8) = \dots + \dots = \dots$$

$$\dots = 342 \cdot 3$$

$$6 \cdot 315 = \dots + 90 = \dots$$

$$1080 = 9 \cdot \dots$$

$$9 \cdot 21 = (10 \cdot \dots) - (1 \cdot \dots) = \dots - \dots = \dots$$

$$1000 \cdot (7 \cdot \dots) = 49'000$$

$$627 - 77 = 600 - \dots = \dots$$

$$978 + 192 = 1000 + \dots = \dots$$

$$394 - 97 = \dots - 100 = \dots$$

Nom + prénom :

Date :

CALCUL MENTAL – REVISION 5P

Durée : 10 minutes

$67 + 21 = \dots\dots\dots$

$34 \cdot 12 = \dots\dots\dots$

$435 + 199 = \dots\dots\dots$

$75 \cdot 5 = \dots\dots\dots$

$45 \cdot 11 = \dots\dots\dots$

$96 : 12 = \dots\dots\dots$

$84 : 4 = \dots\dots\dots$

$125 : 25 = \dots\dots\dots$

$789 - 101 = \dots\dots\dots$

$476 \cdot 100 = \dots\dots\dots$

$356 - 98 = \dots\dots\dots$

$630 : 10 = \dots\dots\dots$

$72 : 12 = \dots\dots\dots$

$80 \cdot 9 = \dots\dots\dots$

$36 \cdot 5 \cdot 2 = \dots\dots\dots$

$70 \cdot 8 = \dots\dots\dots$

$720 : 8 = \dots\dots\dots$

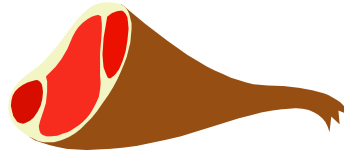
$35 \cdot 4 = \dots\dots\dots$

$36+35+34+26+25+24 = \dots\dots\dots$

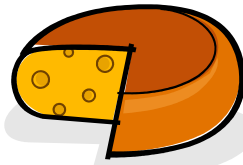
$$74 + 74 + 74 + 74 + 74 = \dots\dots\dots$$

Nom + prénom :

Objectif : *utiliser et compléter des tableaux de correspondance*



Poids (g)	1000	200		500		600	1200	
Prix (frs)	25		30		2,50			20



Poids (g)	500		1200		1050			
Prix (frs)	35	7		42		70		



Quantité (l)	1		4	12		25		3
Prix (frs)	1,50	12			30		19,50	



Nbre de tours	1		15		2		75
Distance (km)	0,4	2		12		2,8	

Nom + prénom :

Date :

CALCUL MENTAL – REVISION 5P

Durée : 10 minutes

$67 + 21 = \dots\dots\dots$

$34 \cdot 12 = \dots\dots\dots$

$435 + 199 = \dots\dots\dots$

$75 \cdot 5 = \dots\dots\dots$

$45 \cdot 11 = \dots\dots\dots$

$96 : 12 = \dots\dots\dots$

$84 : 4 = \dots\dots\dots$

$125 : 25 = \dots\dots\dots$

$789 - 101 = \dots\dots\dots$

$476 \cdot 100 = \dots\dots\dots$

$356 - 98 = \dots\dots\dots$

$630 : 10 = \dots\dots\dots$

$72 : 12 = \dots\dots\dots$

$80 \cdot 9 = \dots\dots\dots$

$36 \cdot 5 \cdot 2 = \dots\dots\dots$

$70 \cdot 8 = \dots\dots\dots$

$720 : 8 = \dots\dots\dots$

$35 \cdot 4 = \dots\dots\dots$

$$36+35+34+26+25+24 = \dots\dots\dots$$

$$74 + 74 + 74 + 74 + 74 = \dots\dots\dots$$

Nom + prénom :

Objectif : résoudre des puissances

$2^2 = \dots\dots\dots$

$20^2 = \dots\dots\dots$

$3^2 = \dots\dots\dots$

$2^3 = \dots\dots\dots$

$4^2 = \dots\dots\dots$

$3^3 = \dots\dots\dots$

$5^2 = \dots\dots\dots$

$4^3 = \dots\dots\dots$

$6^2 = \dots\dots\dots$

$5^3 = \dots\dots\dots$

$7^2 = \dots\dots\dots$

$10^3 = \dots\dots\dots$

$8^2 = \dots\dots\dots$

$2^4 = \dots\dots\dots$

$9^2 = \dots\dots\dots$

$3^4 = \dots\dots\dots$

$10^2 = \dots\dots\dots$

$5^4 = \dots\dots\dots$

$11^2 = \dots\dots\dots$

$10^4 = \dots\dots\dots$

$12^2 = \dots\dots\dots$

$2^5 = \dots\dots\dots$

$15^2 = \dots\dots\dots$

$2^6 = \dots\dots\dots$

